



Practical guide 'GETTING AROUND'

Security perimeters

During the Olympic Games

Updated: 7/11/2024

Brief overview:

From 26 July to 11 August, Paris will be hosting the Olympic Games in several symbolic and exceptional venues, including the Eiffel Tower, Place de la Concorde, and the Grand Palais. Paris will be at the heart of the Games and transformed to welcome this global event.

To guarantee the safety of all and to manage visitor flows, safety perimeters will be set up around the competition venues. These will have an impact on car and other motorized traffic but will not impede the free movement of pedestrians and cyclists.

Around each venue, 4 perimeters will be set up: grey, black, red, and blue, and activated a few hours before the start of the events. The Opening Ceremony and road events (cycling, marathon) are also concerned by the perimeters.

1- Which zones will be affected?

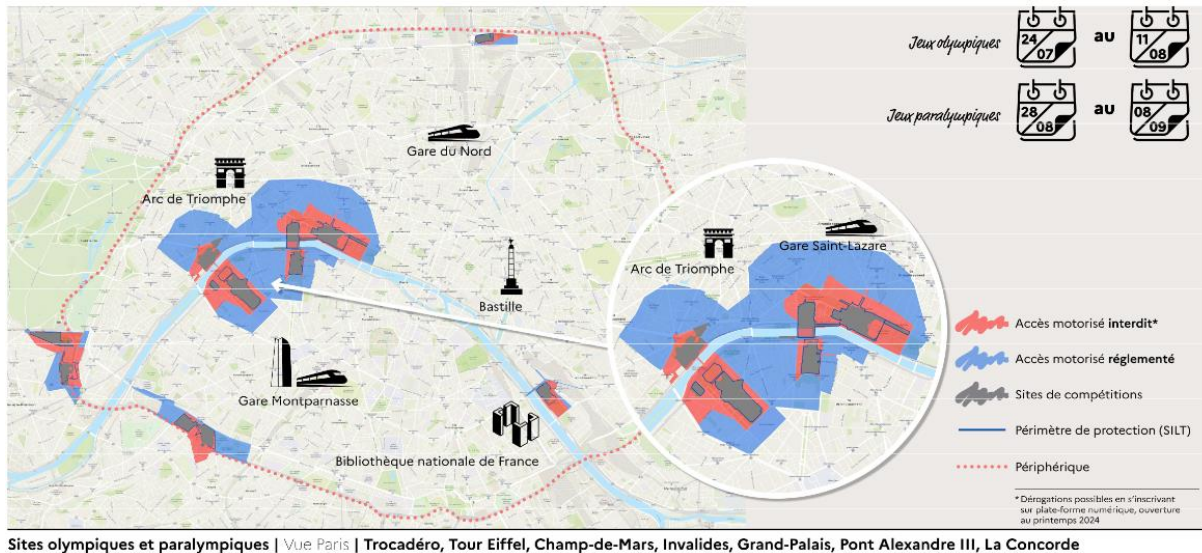
The traffic restrictions will affect the areas around the competition venues in Paris and the Île-de-France region. 25 competition venues are in the Paris region, including 13 in Paris and 12 in the surrounding area in the *départements* of Seine-Saint-Denis, Hauts-de-Seine, Yvelines, and Seine-et-Marne.

The aim of the public authorities is to ensure the safety of all, while at the same time enabling social, economic, and cultural activities to continue as smoothly as possible.

The red and blue perimeters will be in place 2hr30 before the 1st event of the day and until 1hr after the last event of the day.

Outside event periods, all movement of traffic will be authorized.

Zones affected in Paris:



2- How will security perimeters operate around competition venues?

During the Olympic Games, four security perimeters will be established around the competition venues:

a- **The grey perimeter, restricted organizer perimeter (competition venue)**

This is the enclosure of the Olympic venue, in other words the area in which the competition will take place. This grey zone perimeter is managed by Paris 2024.

Access is strictly reserved for Paris 2024-accredited vehicles and pedestrians with a ticket for the event being held.

b- The black perimeter, protective perimeter, known as 'SILT'

The SILT perimeter allows access to the organizer perimeter (competition venue) via certain entry points. This is a standard security measure established by the Préfecture de Police for major events.

Access is strictly reserved for Paris 2024-accredited vehicles and pedestrians with a ticket for the event being held. Only emergency services and Operation Sentinel vehicles are authorized to enter the SILT perimeter.

Bicycles may not enter the SILT perimeter, which is reserved for pedestrians with a ticket.

c- The red perimeter: no motorized traffic allowed

The red perimeter is designed to ease the flow of public entering or leaving a competition site, by closing certain access points to vehicles.

Pedestrians and cyclists are allowed to move around freely, without any controls or authorization required.

Motorized traffic is prohibited, except for authorized persons with a special dispensation.

Examples of possible dispensations:

- Shops and businesses within this perimeter will be required to present proof of identity at the entrances to the zone (employees or customers in motor vehicles, deliveries, etc.).
- Taxis, private hire vehicles, specialized in PRM traveling taxis and LOTI vehicles dropping off or picking up a passenger with a Games Pass or a return ticket with a reservation.

A few examples of points to note:

- Motorized access to museums will not be possible, except for PRM vehicles. Please note that pedestrians and cyclists will be allowed to circulate.
- RATP buses and tourist coaches will not be able to access the red perimeter.

d- The blue perimeter: restricted motorized traffic

The blue perimeter is designed to reduce motorized traffic around the red zone.

Pedestrians and cyclists are allowed to move around freely, without any controls or authorization required.

The circulation of motorized vehicles is restricted to drivers whose situation requires them to travel within this zone. This perimeter will be subject to random checks. No documentary proof of movement will be required within this perimeter.

e- Overview: persons authorized to access the perimeters

	Blue perimeter	Red perimeter	Supporting documents
Pedestrians	YES	YES	
Bicycles	YES	YES	
Motor vehicles			
Taxis	YES	YES (if dropped off by someone with a Games Pass, or if picked up by reservation)	For the customer: ID + proof of address
Private hire vehicles and LOTI vehicles	YES	YES (if dropped off by someone with a Games Pass, or if picked up by reservation)	For the customer: ID + proof of address
Public transport (bus RATP)	YES	NO (unless it is totally impossible to deviate, with a derogation)	
Coaches / Tourist coaches	YES	NO	
Transportation of people with disabilities Vehicles used by people with disabilities, with supporting documents	YES	YES (with a Pass Jeux)	Identity document + vehicle registration document + proof of mission + verification of person on board
Car rental companies with parking facilities in these zones	YES	YES (only to leave or return to the parking area, at the beginning or end of the rental period - with a Pass Jeux)	Identity card + employer's certificate + proof of parking in the zone
Vehicles of hotel guests	YES	YES (with a Pass Jeux)	Identity cards for vehicle occupants, proof of hotel parking space
Vehicles used by visitors to places open to the public (schools, museums, etc.)	YES	NO (except PRM-witj a Pass Jeux)	For PRMs: identity card, vehicle registration document, proof of PRM status (CMI, European disability card, etc.)
Logistics professionals: Delivery vehicles needed to transport supplies for establishments (shops, medical facilities, etc.).	YES	YES (in accordance with authorized slots-with a Pass Jeux)	Employer's certificate + vehicle registration certificate + identity document + proof of delivery

For personal vehicles authorised to circulate within the red perimeter, a Games Pass application must be made for the vehicle.

Source: Complete table of persons authorized to access the perimeters, available on the City of Paris website: [>>table](#)

3- Do the perimeters apply to pedestrians and cyclists?

Pedestrians and cyclists (bicycles, kick scooters, etc.) will be able to move freely within the **blue** and **red** perimeters.

Access to the **SILT perimeter** is restricted to pedestrians in possession of a competition ticket. Bicycles are not allowed. Bicycle parking will be available.

4- How will security perimeters operate for events other than competition venues?

Some events, such as the marathon, cycling and the Opening Ceremony, will be held outside the stadiums, and will therefore be subject to special perimeters.

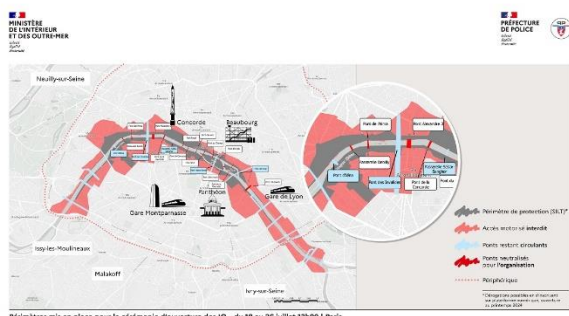
a- The Opening Ceremony

For the first time, the Opening Ceremony will take place outside a stadium. The Seine will be the backdrop for this extraordinary event marking the start of the Olympic Games.

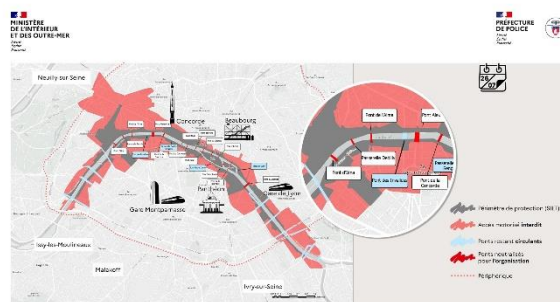
From 17 June to 18 July, the infrastructure will gradually take shape on the upper and lower quays around the Seine.

From 18 July onwards, a first security perimeter will be set up (see map below) around the Seine, following the same regulations as the perimeters for the competition venues.

On 26 July, the **red perimeter** will be enlarged (see map below) and motorized traffic will be completely prohibited across the entire perimeter.



Périmètres mis en place pour la cérémonie d'ouverture des JO – du 18 au 26 juillet 13h00 | Paris



Périmètres mis en place le jour de la cérémonie d'ouverture des JO | Paris

See the detailed map [here](#)

For more information on the opening ceremony, a dedicated practical guide is available in our resource centre.

b- Road events

Some events will take place outside the stadiums and will cross the city. Road events (cycling, marathon) will be subject to special measures.

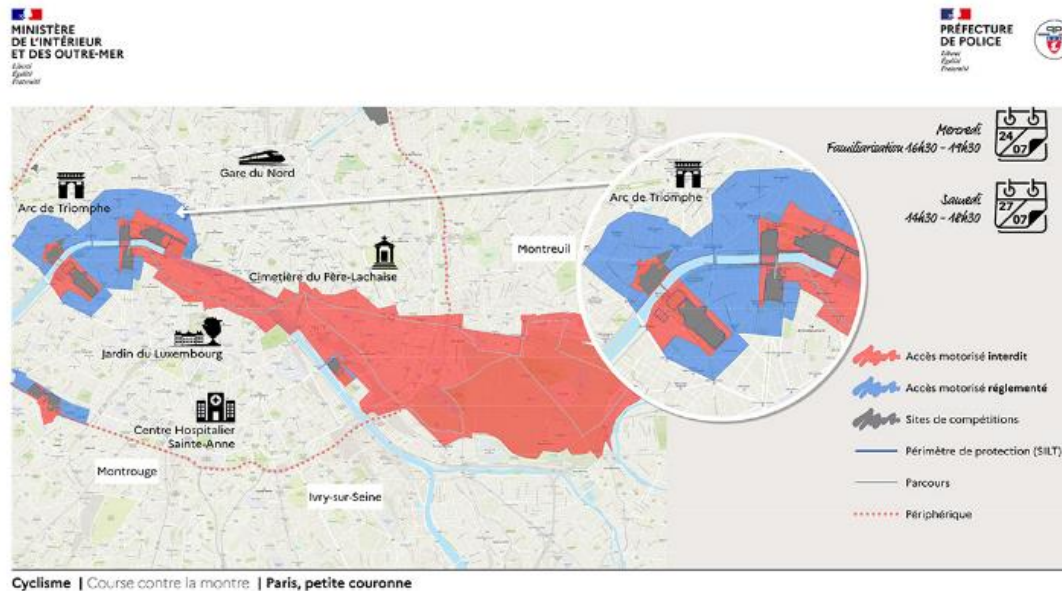
The day before each event, a perimeter will be set up around the course to enable athletes to familiarize themselves. Crossing points will be identified on the route to

enable emergency vehicles to cross. In principle, no vehicles will be allowed on the course, except for emergency vehicles.

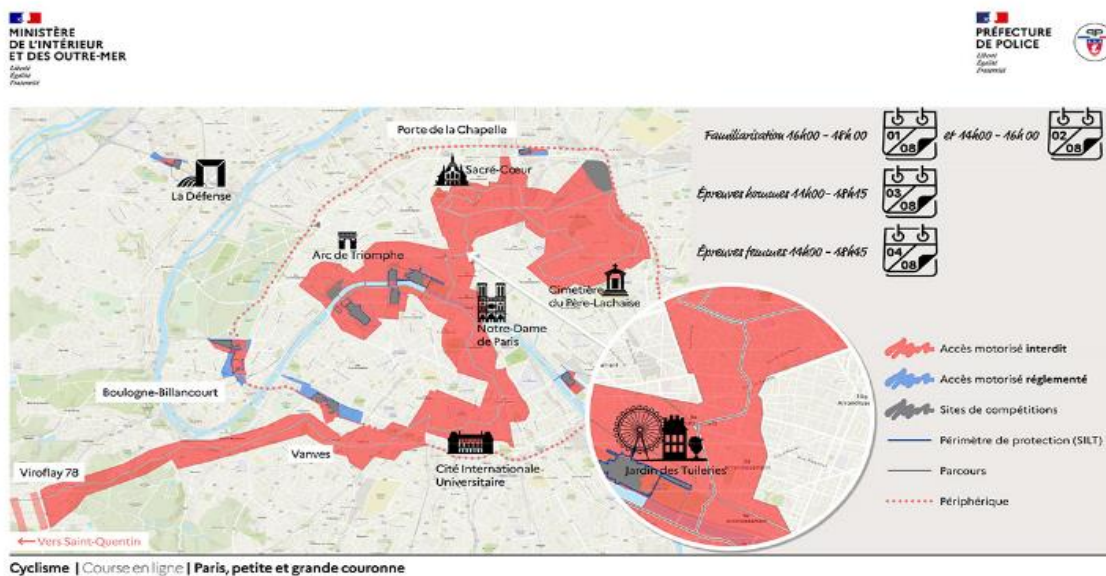
Here is the list of dates and times for these perimeters:

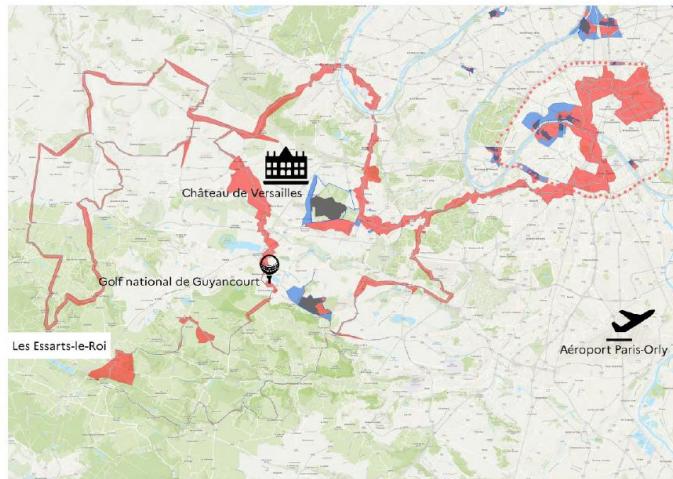
→**Time-trial, Cycling:** 27 July from 2.30pm to 6.30pm

Familiarization tour on 24 July.



→**Road race, Cycling:** 3 August from 11am to 6.15pm and 4 August from 2pm to 6.45pm





Épreuves hommes 14K00-18K45

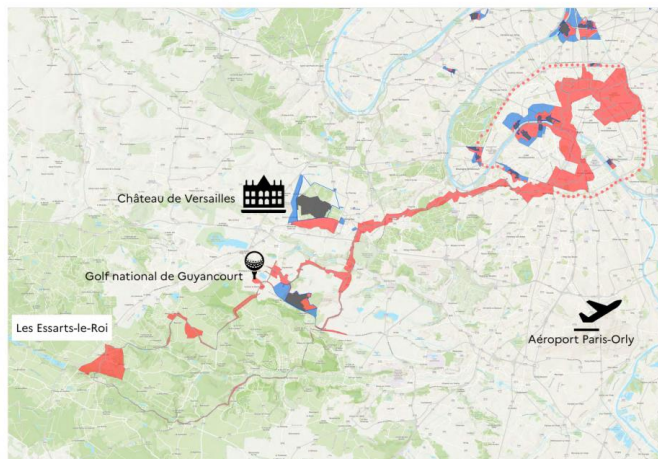


Accès motorisé interdit*

Accès motorisé réglementé

Périphérique

* Dérogations possibles en s'inscrivant sur plate-forme numérique, ouverte au printemps 2024.



Épreuves femmes 14K00-18K45



Accès motorisé interdit*

Accès motorisé réglementé

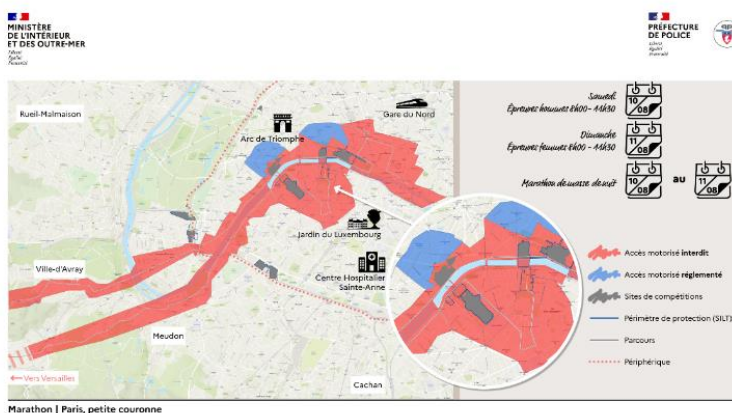
Périphérique

* Dérogations possibles en s'inscrivant sur plate-forme numérique, ouverture

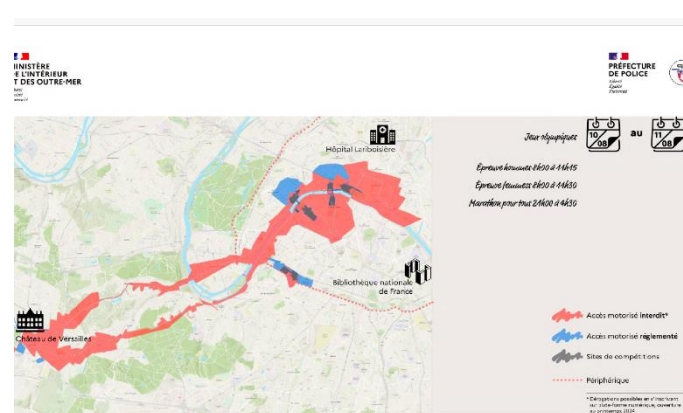
Familiarization tour on 1 and 2 August

→ **Marathon for all:** night of 10 to 11 August

→ **Marathon:** 10 August from 8am to 11.30am and 11 August from 8am to 11.30am

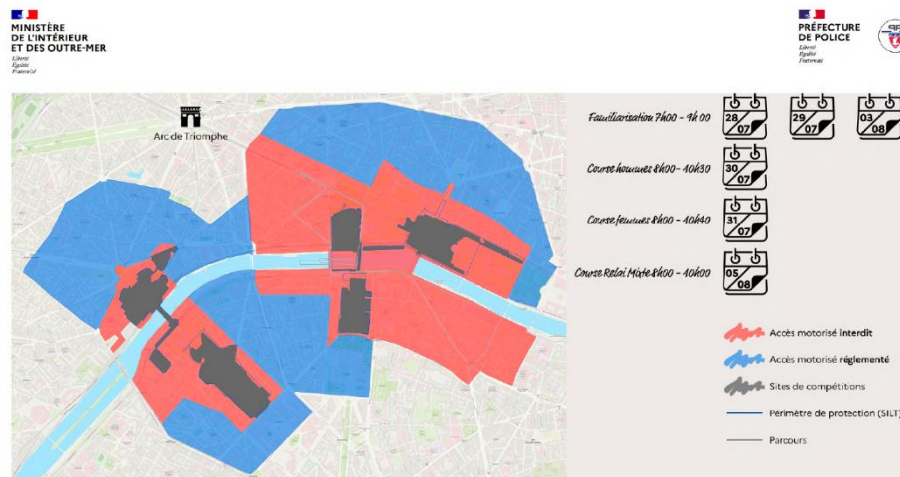


Marathon | Paris, petite couronne



→**The Triathlon:** 30 July from 8am to 10.30am, 31 July from 8am to 10.40am and 5 August from 8am to 10am

Familiarization tour on 28 and 29 July and 3 August



See all the maps [here](#)

As well as real-time traffic information on the government tool [here](#)

c- Bridge closures

The assembly stages and the setting up of safety perimeters will gradually lead to the closure of several bridges between the Pont d'Austerlitz and Pont de Bir Hakeim. (precise timetable to come)

To avoid making access between the right and left banks impossible, some bridges will remain open from 18 to 26 July from 1pm:

Pont d'Iéna (except from July 12 to 16 and from July 22)

Pont des Invalides

Passerelle Sédar-Senghor

Pont Notre-Dame

Pont de Sully

Petit pont du Cardinal Lustiger

All bridges upstream of the Pont d'Austerlitz (excluded) and downstream of the Pont de Bir Hakeim (included)

Only several bridges will remain open on 26 July between 1pm and 7pm. Then it will no longer be possible to cross them.

The remaining bridges upstream of the Pont d'Austerlitz and downstream of the Pont d'Iéna will remain open to traffic.

Resources to keep you up to date:



The website [Planning ahead for the Games](#) *(in French)*, information and advice to anticipate travel during the period of the Games The [JOP mission file](#) *(in french)* from the Préfecture de Police with key info on setting up security perimeters.

Online platform to get a derogation [here](#).



Ville de Paris:

[FAQ](#) *(in French)* on the security perimeters during the Games.

The newsletter [Paris info Games 2024](#) *(in French)* to sign up for and receive personalized information before and during the Games.



Paris je t'aime - Tourist Office:

Information on the Games for tourist trade professionals: [Olympic and Paralympic Games resources centre](#) *(in French)*

To guide your customers: [My.parisjetaime.com](#) *(in English)* a map with geolocation to guide users via itineraries, identify points of interest around them, etc.



PASS JEUX

Pass Jeux

The [Pass Jeux](#) platform to obtain an exemption and circulate within the security perimeters.