



Practical guide 'GETTING AROUND'

Security perimeters and installation

Opening Ceremony of the Olympic Games

Updated: 11/07/2024

Brief overview:

On 26 July 2024, the Opening Ceremony of the Olympic Games will officially launch the start of the Paris 2024 Games. For the first time in the history of the Olympic Games, it will be staged away from a stadium, on the river Seine, and will be attended by 300,000 visitors. The spectacle has been devised by artistic director Thomas Jolly and will take the form of a 6-kilometre parade along the river.

Preparing for an event of international stature requires special, meticulous planning. Between 17 June and 26 July, preparations for the site will begin and a security perimeter will be set up around the river. Here are some details to help you gain a better understanding of the security and installation stages for the Opening Ceremony of the Olympic Games.

1- The Opening Ceremony in figures:

The Opening Ceremony will be broadcast around the world with exceptional coverage for an extraordinary spectacle. In a few figures:

- 326,000** spectators (104,000 places on the lower quays, 222,000 free places on the upper quays)
- 1.5 billion** television viewers
- 6 km** stretch of river on which local residents can admire the spectacle from their balconies
- 10,500 athletes** representing **205 delegations** spread across **94 boats**

2- Installation of sites

From 17 June to 26 July, the upper and lower quays will be gradually fitted out, with installations for the ceremony (stands, rows of seats, stage setting, etc.) extending along the Seine between the Pont d'Austerlitz and Pont d'Île.

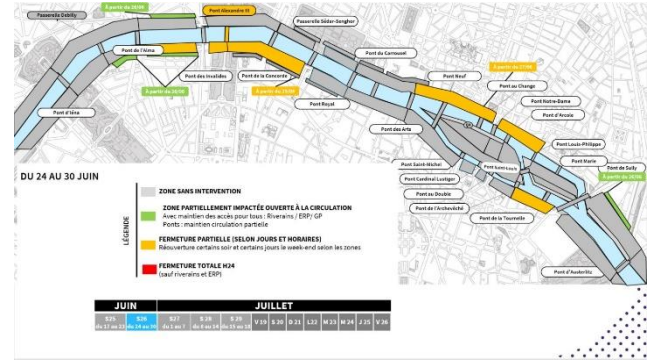
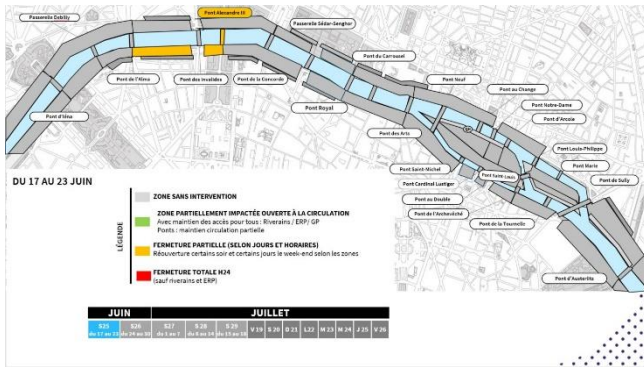
- a- From 17 June to 30 June

Beginning of restricted area measures with partial closure of certain quays:

17 June: beginning of installation work on the lower quays

NB: 17 June: rehearsal for the ceremony on the Seine (closure of the Seine from 5am to 12 noon)

26 June: beginning of installation work on the upper quays



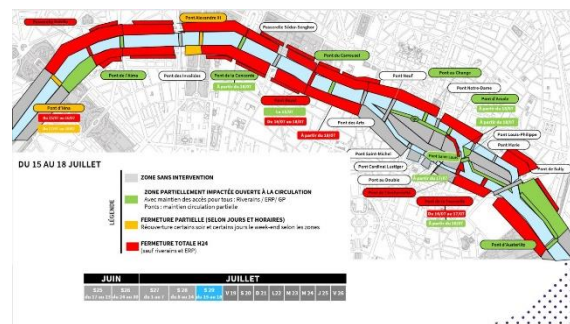
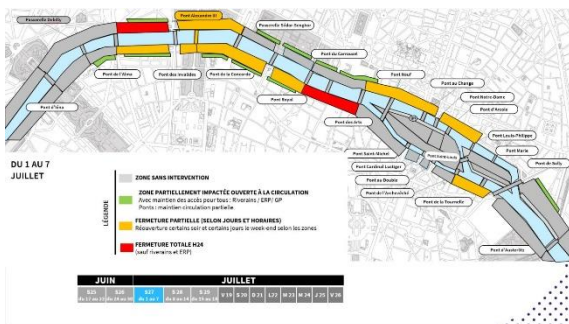
b- From 1 July to 17 July

Extension of the worksite leading to the total closure of certain quays

From 1 July: circulation difficult in the area (installation of stands).

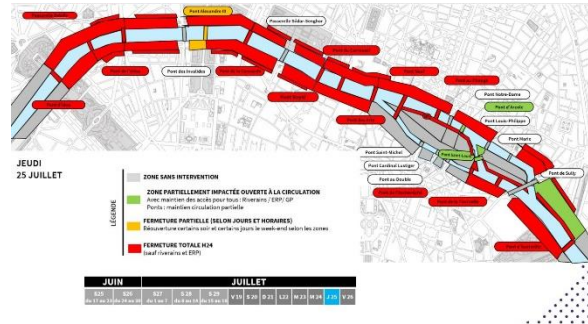
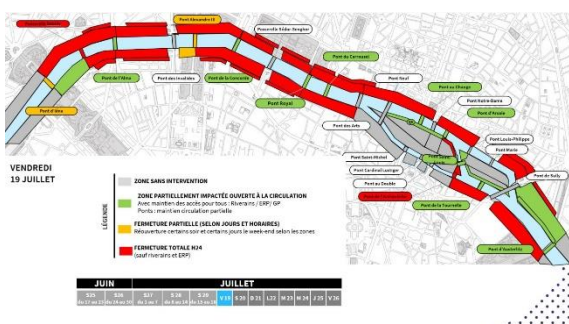
8 July: beginning of installation work on the bridges starting with the Passerelle Debilly pedestrian bridge.

From 14 July: closure of upper and lower quays to the general public with access for residents and access to public buildings maintained.



c- From 18 July to 25 July

Continuation of the installation work on the upper and lower quays, and gradual closure to the public with access for residents and access to public buildings maintained.



See all the maps [here](#) (in French)

3- Security perimeters

Following the same principle as for the competition venues at the Olympic Games, the Préfecture de Police will be setting up a security perimeter around the site of the Opening Ceremony. The perimeters will be activated from 18 July until the day of the Opening Ceremony, on 26 July, with an evolving system. The aim is to guarantee the safety of the site.

The registration platform for obtaining a derogation [Pass Jeux](#)

a- From 18 July to 26 July at 1pm

Perimeter	Access pedestrians/cyclists	Motorized access
SILT	Controlled, subject to digital pass	NO ENTRY except a few derogations, subject to digital pass
RED	FREEDOM OF MOVEMENT, no digital pass required	NO ENTRY except derogations, no digital pass required

See the table of persons authorized to circulate [here](#)

Online platform to get a derogation [here](#).

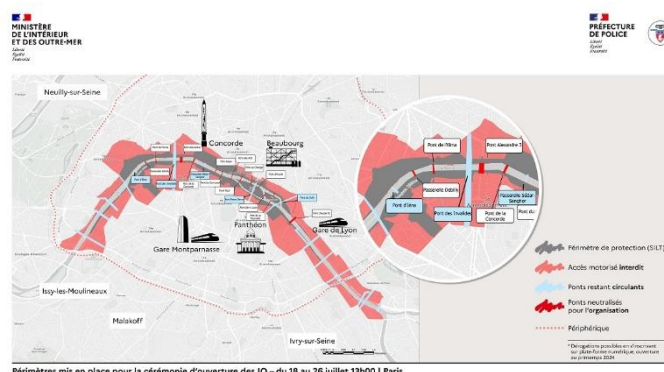
→ **SILT perimeter (grey)**: activated continuously, 8 days before the ceremony. Screening of everyone, identity checks, pat-downs, searches, opening of boot.

→ **Red perimeter**: Exemptions identical to those for motorized access to the red perimeters around the Olympic venues, but **not requiring a pass**

Vehicle access: presentation of valid documents at checkpoints.

Access **outside the perimeter** to places such as the Louvre Museum, the Institut du Monde Arabe and the Gare d'Austerlitz, on condition of having an entry ticket or train ticket.

Possibility of crossing the Seine without stopping, by crossing the bridges that are open.



b- On 26 July from 1pm:

Perimeter	Access pedestrians/cyclists	Motorized access
SILT	Controlled, subject to digital pass or ticket or access authorization	NO ENTRY except security forces (FSI)/Emergency services
RED	FREEDOM OF MOVEMENT, no digital pass	NO ENTRY except security forces (FSI)/Emergency services

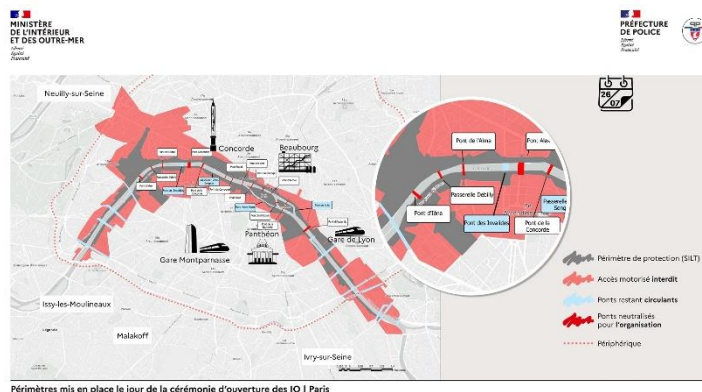
See the table of persons authorized to circulate [here](#) (in French)

Online platform to get a derogation [here](#).

→ **SILT perimeter (grey)**: Stricter derogation conditions for access. As for the period 8 days before the ceremony (identity checks, pat-downs, searches, etc.).

→ **Red perimeter**: Enlargement of the perimeter. Motorized access prohibited except in rare cases, with no digital pass required.

Some bridges will remain open until 7pm. Afterwards, crossing them will not be possible.



See the press file of the Préfecture de police on the Opening Ceremony [here](#) (in French)

4- Circulation on bridges

The assembly stages and the setting up of safety perimeters will gradually lead to the closure of several bridges between the Pont d'Austerlitz and Pont de Bir Hakeim. (precise timetable to come)

To avoid making access between the right and left banks impossible, some bridges will remain open from 18 to 26 July from 1pm:

Pont d'Iéna (except from July 12 to 16 and from July 22)

Pont des Invalides

Passerelle Sédar-Senghor

Pont Notre-Dame

Pont de Sully

Petit pont du Cardinal Lustiger

All bridges upstream of the Pont d'Austerlitz (excluded) and downstream of the Pont de Bir Hakeim (included)

Only several bridges will remain open on 26 July between 1pm and 7pm. Then it will no longer be possible to cross them.

The remaining bridges upstream of the Pont d'Austerlitz and downstream of the Pont d'Iéna will remain open to traffic.

5- River traffic

The Opening Ceremony and the organization of this event will have a direct impact on the Seine. There are several stages to consider:

17 June: rehearsal of the ceremony on the Seine (closure of the Seine from 5am to 12 noon)

From 20 July at 2am to 27 July at 12 noon: closure to river traffic

Boats remain alongside the quay, no movement (except some accommodation)

26/7: closure of all activities on the quays (except OnLocation)

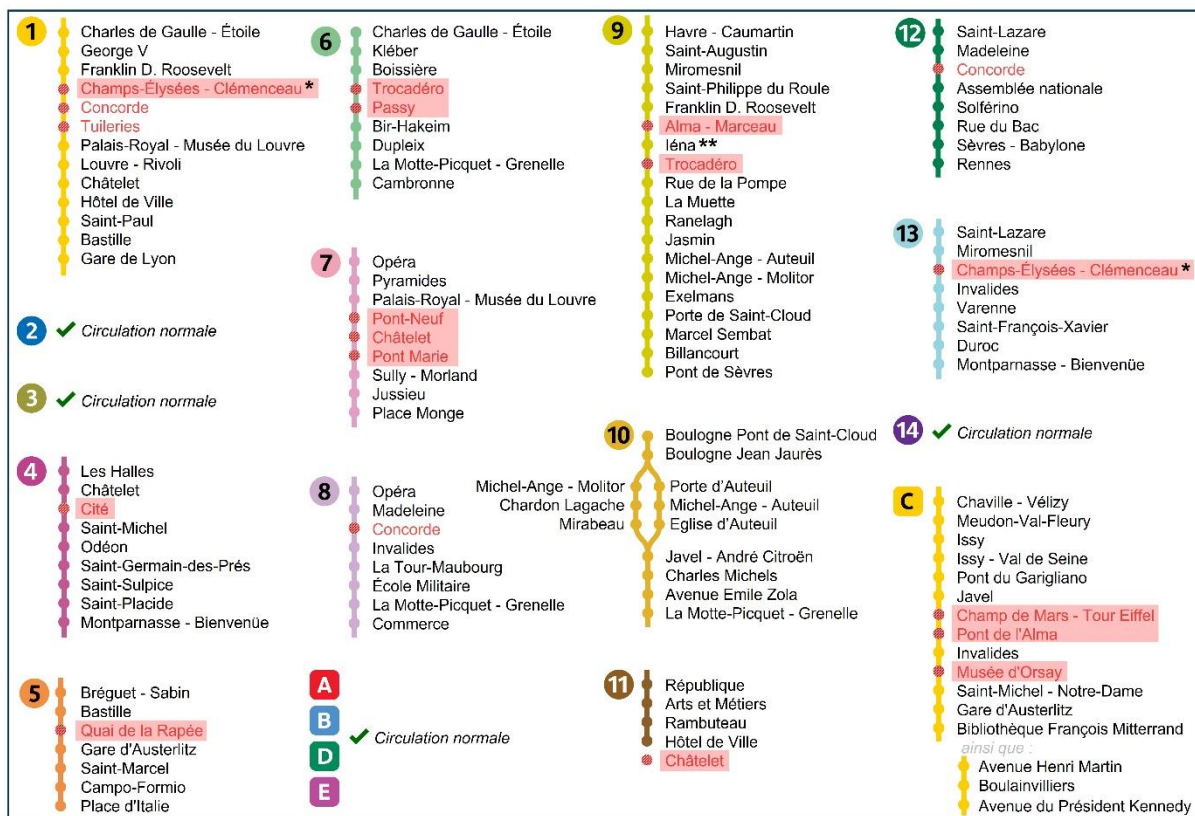
27/7 at 12 noon: possibility of resuming activities

Full calendar, [here](#) (in French)

6-Circulation on public transport

From July 18 to 25, certain metro and RER stations directly within the SILT perimeter will be closed.

Du 18 juillet au 25 juillet inclus



Légende

Arrêt non-desservi, le train ne marque pas l'arrêt

Fermeture supplémentaire par rapport à la période précédente

* Fermeture de Champs-Élysées - Clémenceau à partir du 20 juillet

** Fermeture de l'Éna uniquement le 24 juillet

- St Michel station on the RER C, however, will remain open.
- On line 7, Sully-Morland station will remain open until the evening of 25 July, so that the line can be operated in a single section.
- On line 9, Léna station will remain open until 25 July inclusive (with the exception of Thursday 24 July).

Bus routes crossing both perimeters will be diverted. (Some buses will be able to operate in the red perimeter on an exceptional basis).

Please note

The Austerlitz station is within the red perimeter, but pedestrian access will be maintained, and bus and cab access will be provided on an exceptional basis.

July 26:

No buses will be allowed inside the red and gray perimeters.

Many stations will be closed, with hour-by-hour details.

Outside these perimeters, public transport will be maintained during the opening ceremony.

Find all closed stations [here](#)

Get real-time information on the [government map](#)

7-Dismantling schedule

From the day after the ceremony, areas will gradually be freed up, allowing traffic to flow again around the Seine (partial, due to the presence of competition venues):

27 July-2 August: freeing up of one part of the spaces

29 July: partial reopening to traffic of the upper quays (partially impacted area open to traffic with occasional routes for cyclists or pedestrians)

4 August: end of dismantling of the upper quays

12 August-25 August: gradual freeing up of the entire area (except Pont Alexandre-III used for the events on the Seine).

Resources to keep you up to date:



The website [Planning ahead for the Games](#) (*in French*), information and advice to anticipate travel during the period of the Games. The [press file of the Opening Ceremony](#) (*in French*), of the Préfecture de Police with key information on the arrangements for 26 July.

Online platform to get a derogation [here](#).



Ville de Paris:

The rubric [Opening Ceremony](#) (*in French*) with the special arrangements and maps.

The newsletter [Paris info Games 2024](#) (*in French*) to sign up for and receive personalized information before and during the Games.



Paris je t'aime - Tourist Office:

Information on the Games for tourist trade professionals: [Olympic and Paralympic Games resources centre](#) (*in French*)

Information on the Games for your MICE customers:

[Parisjetaime.com/Convention](#)

To guide your customers: [My.parisjetaime.com](#) (*in English*) a map with geolocation to guide users via itineraries, identify points of interest around them, etc.



PASS JEUX

Pass Jeux

The [Pass Jeux](#) platform to obtain an exemption and circulate within the security perimeters.