

PARiS

Office du Tourisme
et des Congrès

Accessibility Guide

Fondation Louis Vuitton

Hello, you are about to browse the establishment's Access Guide: « Fondation Louis Vuitton ».

This document indicates all the ways in which this establishment facilitates access for people with specific requirements.

Outside

— Parking

Adapted parking nearby:

- On road parking: Yes
- Private parking: No
- Underground parking: No

Number of places nearby: 5

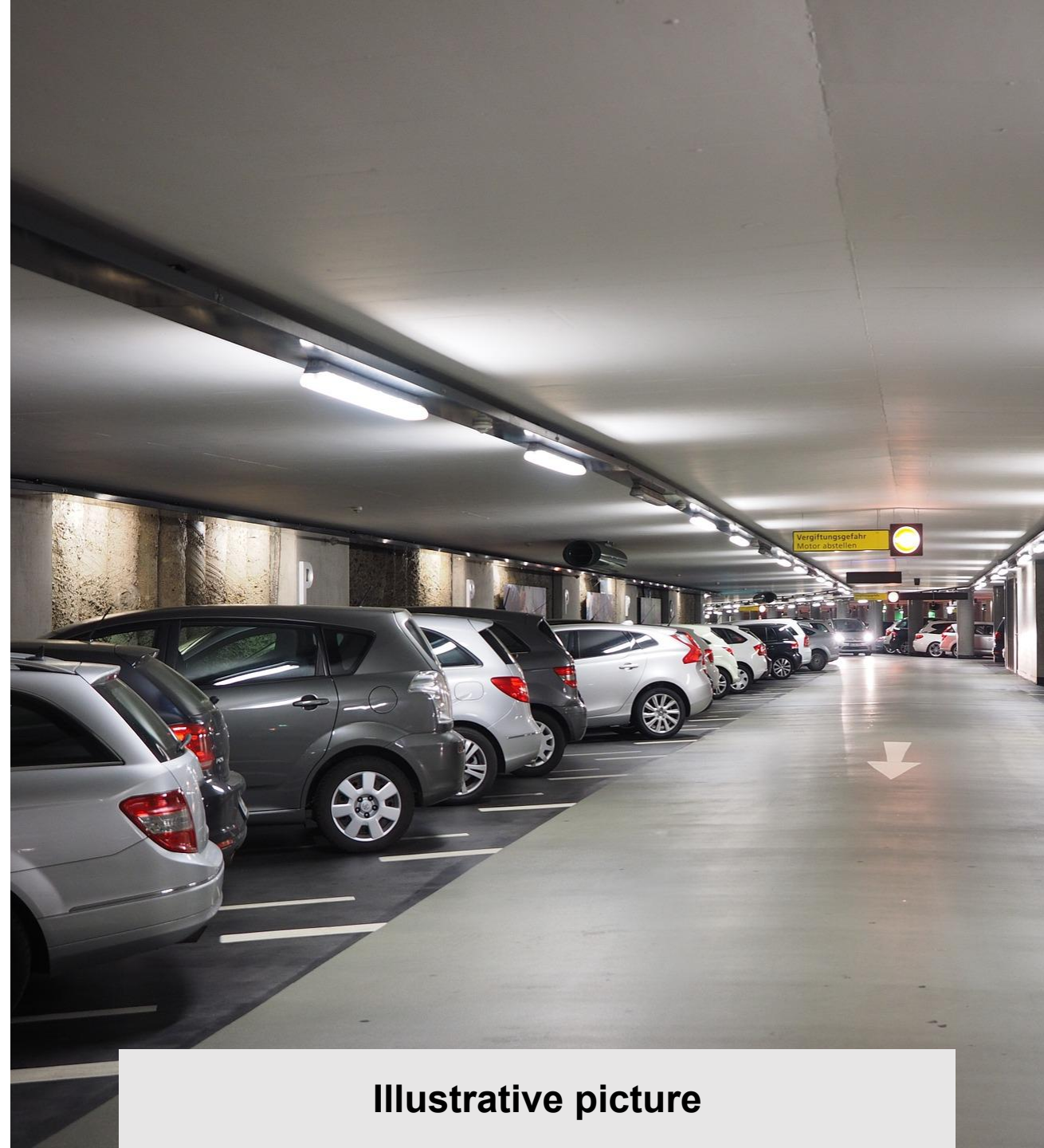
Distance: 30 m

Places signposted: Yes

Drop-off area: Yes

— Access problems

Possible access problems: No specific problems



Illustrative picture

Outside

— Entrance

Type of entrance: On one level

Monitored entrance: Yes

Entrance visible from door: No

— Door

Type of door: Manual door

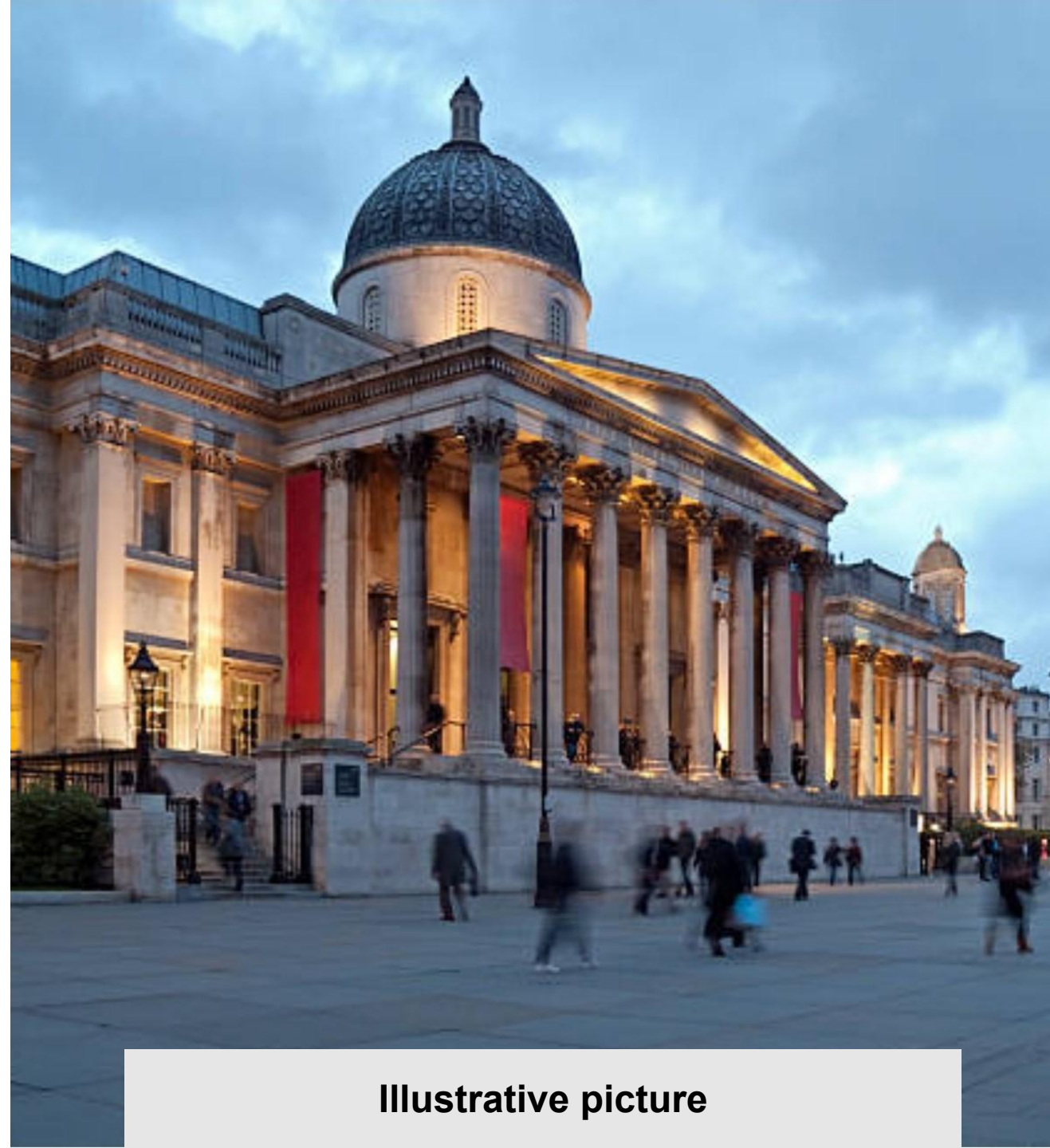
The door has a call facility: No

Indoors

— Indoors

Width of the narrowest corridor: 236 cm

Width of the narrowest doorway: 93 cm



Illustrative picture

Indoors

— Signage

Homogeneous: Yes

Legible: Yes

Easy to understand: Yes

Combined with pictograms: Yes

Duplicated in Braille: No

Relief model: No

Relief map: No

Map in large print: No

Simplified map: No

Map with contrasting colours: No

— Glass walls

Glass walls, if any, are marked:

Contrasting elements at 1.10 m and 1.60 m from the floor



Illustrative picture

Indoors

— Stairs

Presence of stairs in the establishment: Yes

Distinctive features of the stairs:

- Podotactile strip: Yes
- Continuous handrail: Yes
- Contrasting stair nosing: Yes

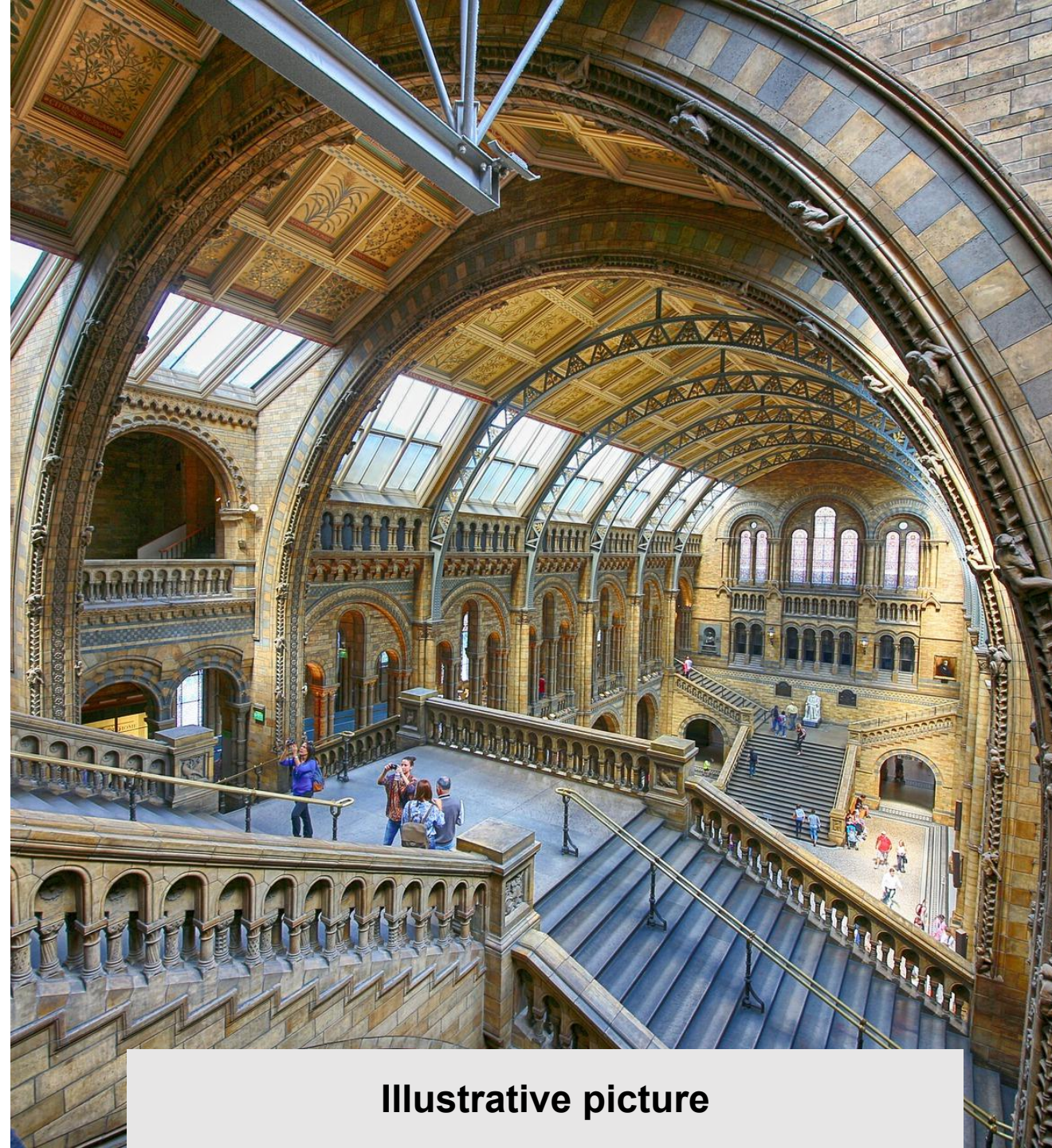
— Lift

Presence of a lift in the establishment: Yes

Height of the highest button: 120 cm

Distinctive features of the lift:

- Announcer: Visual announcer, Sound or voice announcer
- Magnetic induction loop: Yes
- Handrail: Yes
- Buttons: Buttons in Braille, Buttons in large print, Buttons in relief



Illustrative picture

Indoors

— Toilet facilities

Presence of toilets onsite: Yes

These toilets are accessible: Yes

Number of accessible seats onsite: 5

Flashing lights: Yes

Rotation area: Yes

Grab bar: Vertical, Horizontal

Adjustable height: No

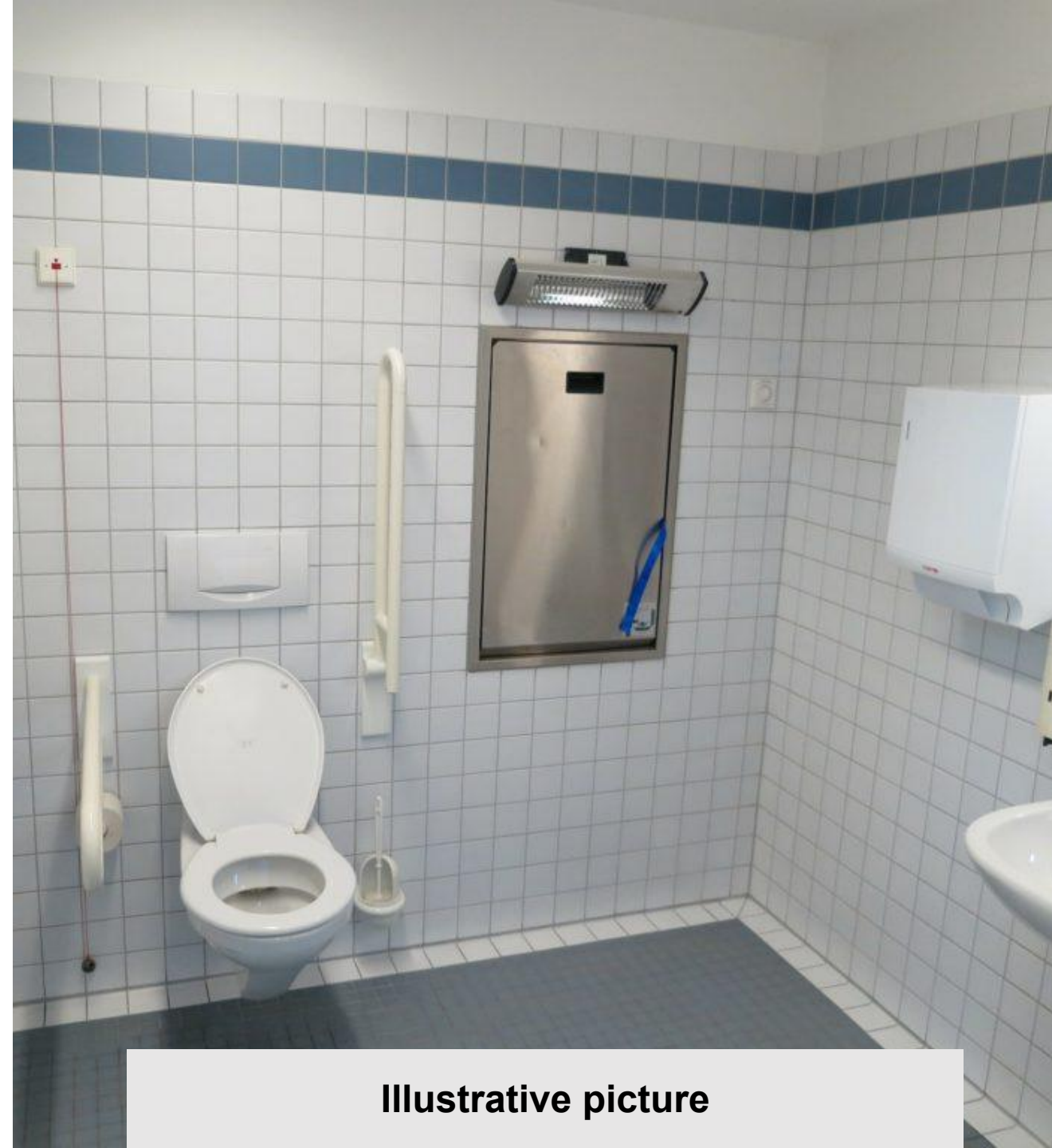
Contrasting colour: Yes

Changing table: Yes

Height of the washbasin: 84 cm

Recessed part under the washbasin: Yes

Corner washbasin: Yes



Illustrative picture

Reception

— Reception

Reception equipped with a magnetic induction loop: Yes

Height of the reception desk: 80 cm

Recessed part under reception desk: Yes

Booking is possible by:

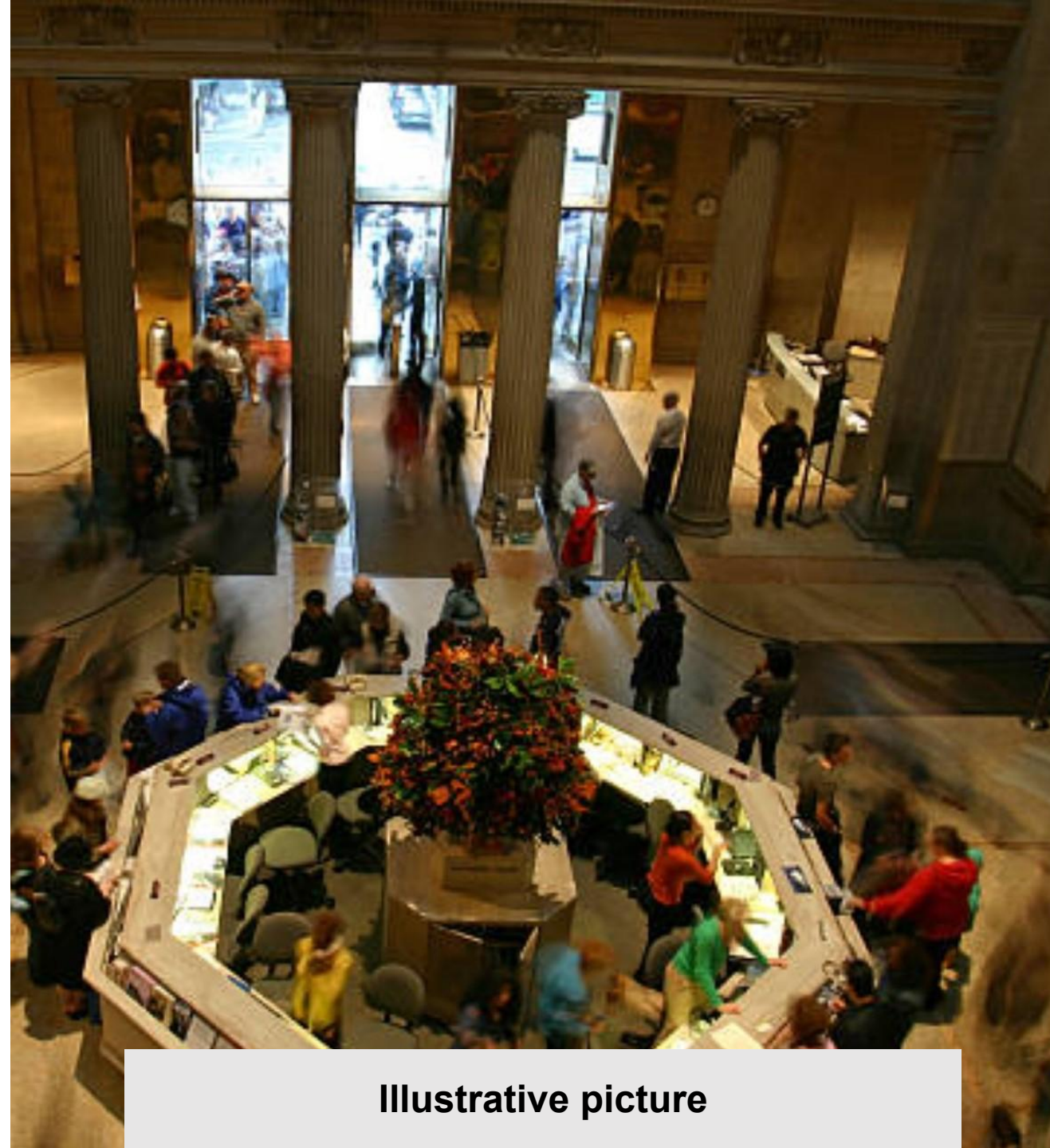
- SMS : No
- Acceo : No
- Email : Yes

— Staff

Staff are provided with awareness training: Yes

Staff are trained: Yes

At least one staff member speaks FSL: No



Illustrative picture

Reception

— Pricing policy

Free on presentation of an official document: Yes

Free for the accompanying person: Yes

Free for seniors (+ 65 yrs): No

Free for children (- 12 yrs): No

Reduced rate on presentation of an official document: No

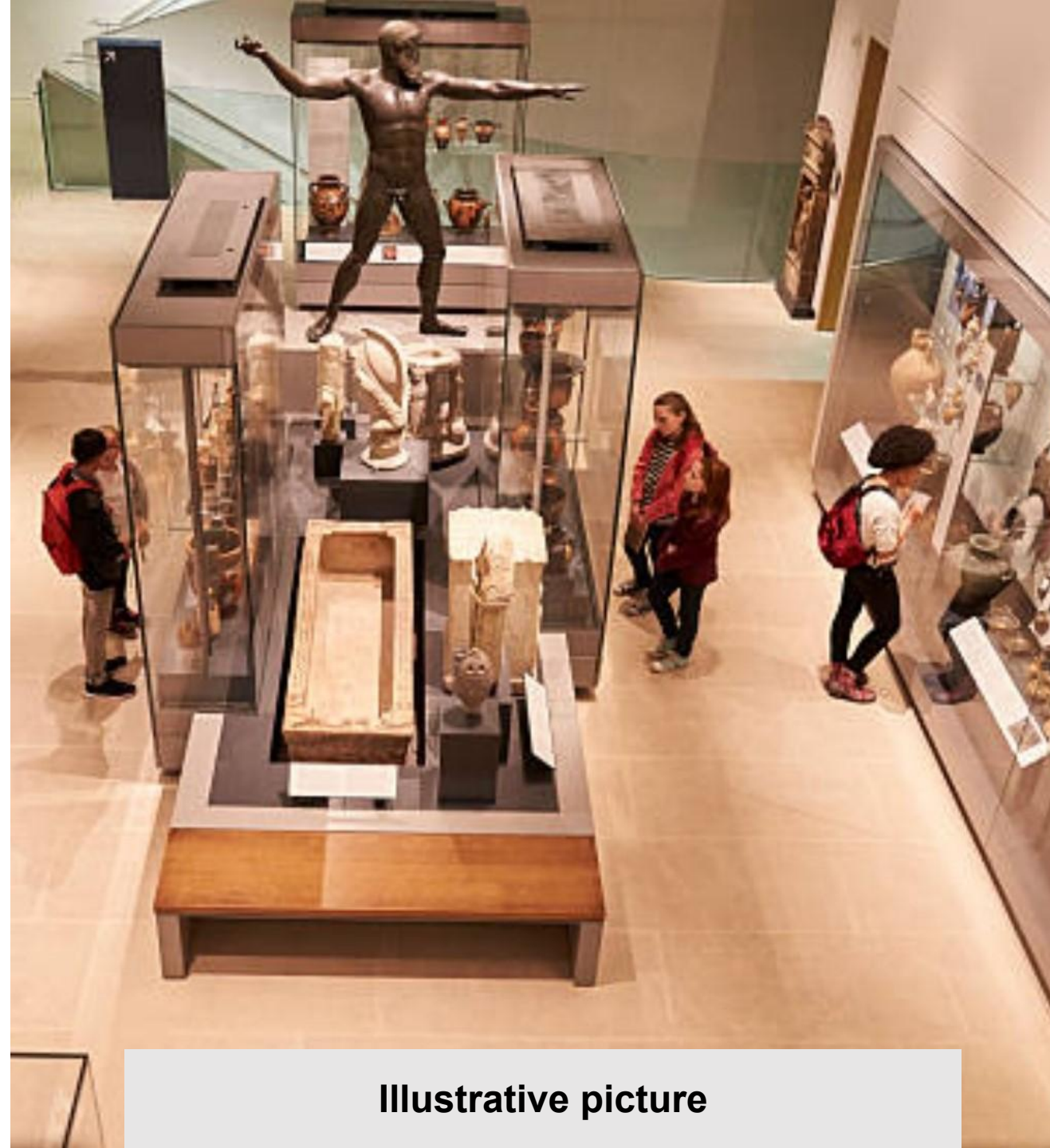
Reduced rate for the accompanying person: No

Reduced rate for seniors (+ 65 yrs): No

Reduced rate for children (- 12 yrs): Yes

Special rate for large families (5 people +): Yes

Other specific rate: No



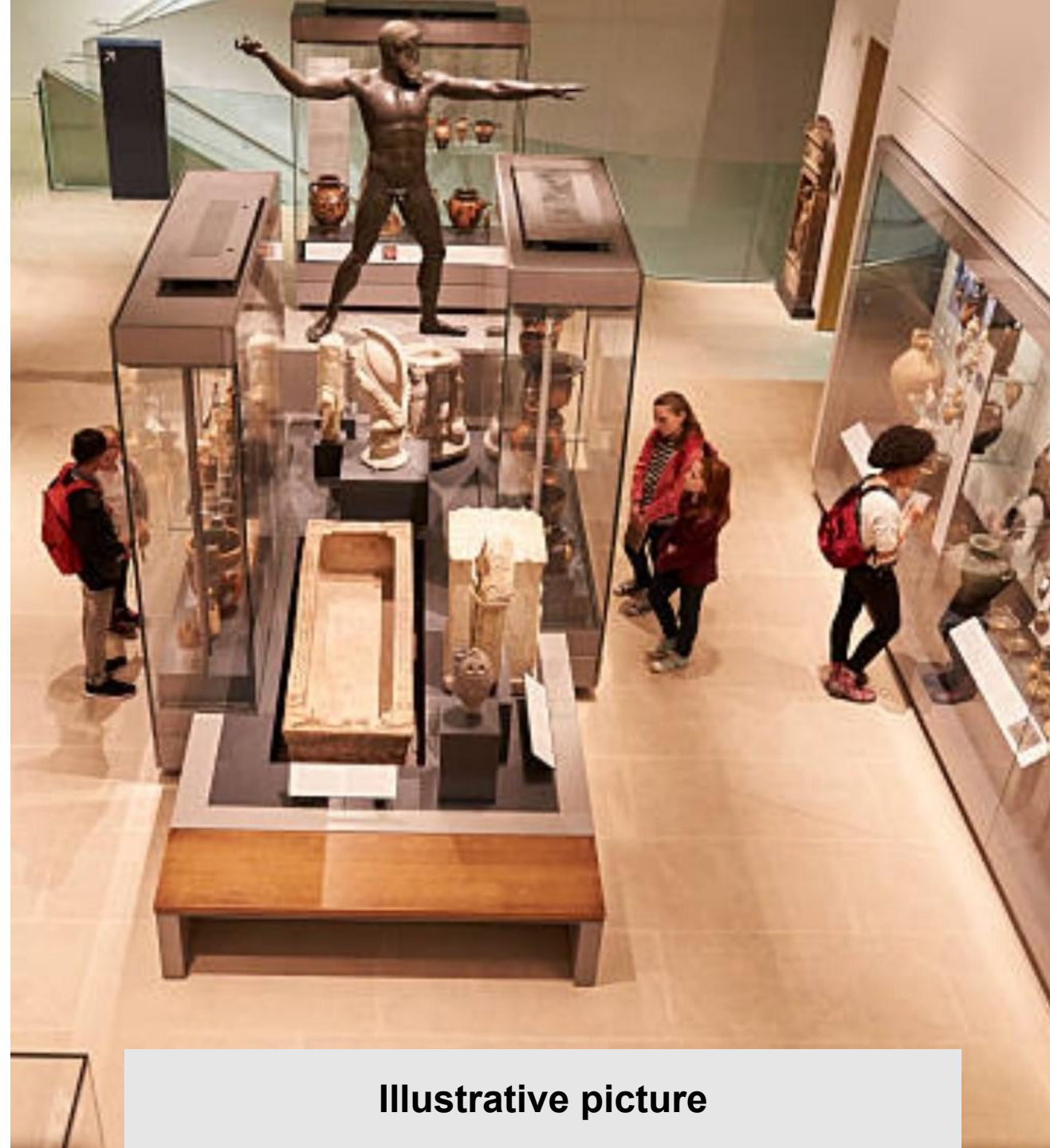
Illustrative picture

Reception

— Pricing policy

The pricing policy applies to the following:

- Self-guided tour: Yes
- Guided tour: Yes
- Temporary exhibitions: Yes
- Audioguides: No
- Pedagogical workshops: Yes
- Concerts : Yes
- Shows: Yes
- Attractions: No
- Meeting rooms: No
- Other types of services: No



Illustrative picture

Reception

— Services

Pets are accepted: Yes

Pushchairs are accepted for the visit: Yes

Loan of baby carriers: No

Loan of pushchairs: No

Loan of wheelchairs: Yes

Loan of cane seats: Yes

Loan of folding seats: Yes

Loan of magnifying glasses: Yes

Sitting areas available in all rooms that can be visited: Yes

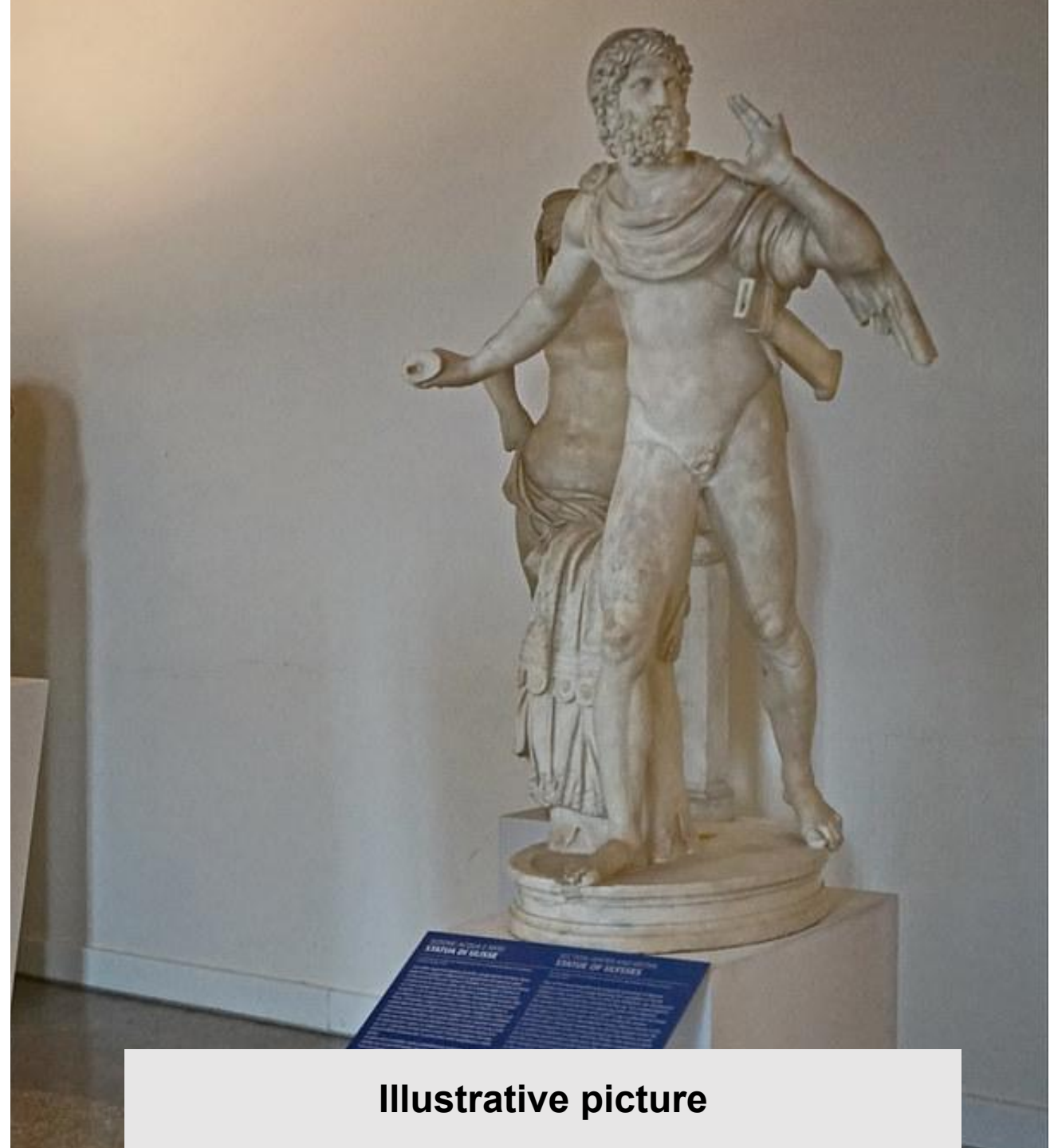
— Wall labels

Height of labels: 150 cm

Large print labels: Yes

Relief labels: No

Braille labels: No



Illustrative picture

The visit

— Visitor aids

Aid in following the show/visit: Yes

Pedagogical workshops: Yes

Documentation in Braille: No

Documentation in large print: No

Thermoformed documentation: No

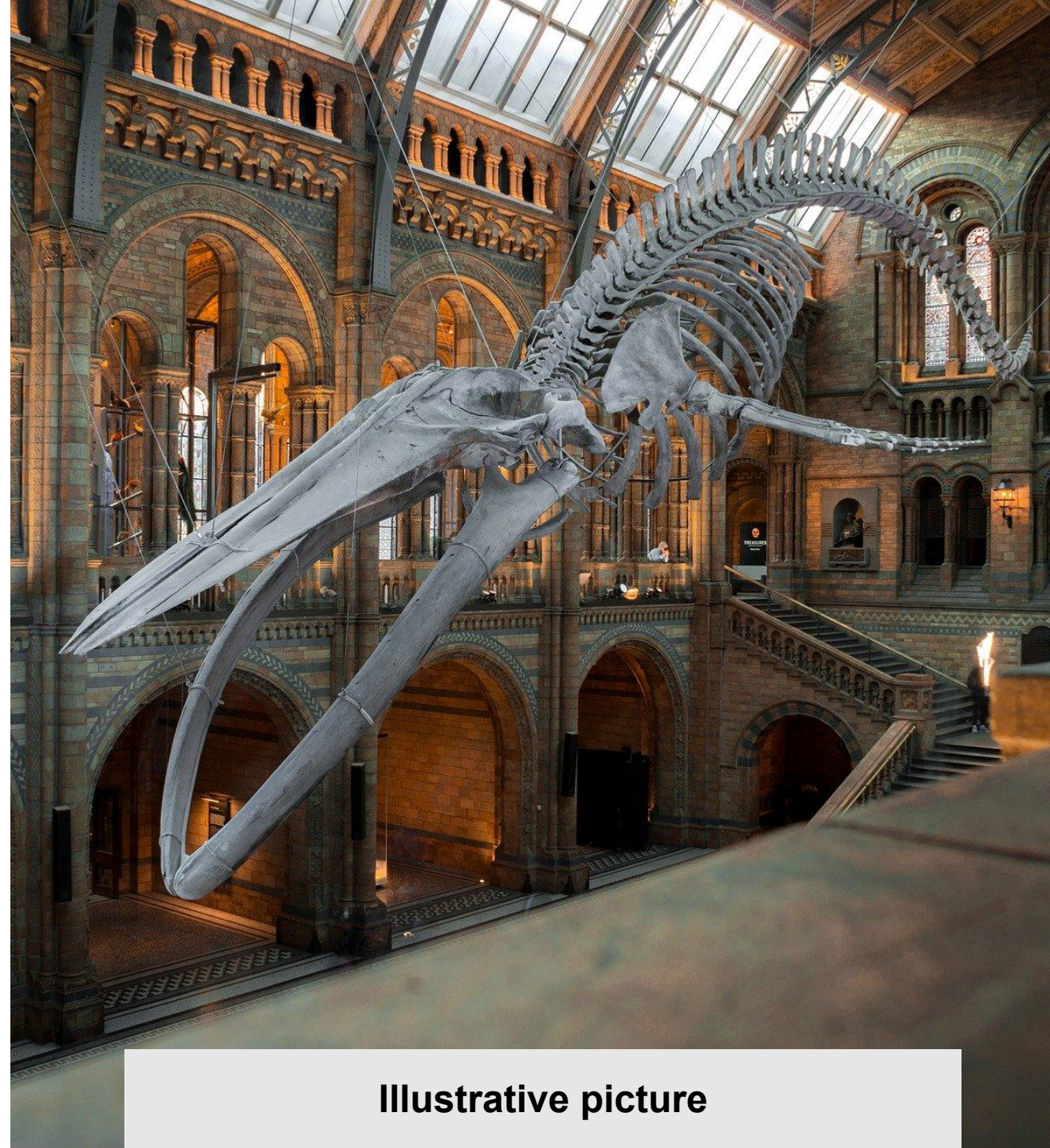
Documentation in Easy read: Yes

App for children / families for a visit: Yes

Children's booklets / games: Yes

Guided tour: Yes

Audio guide: Yes



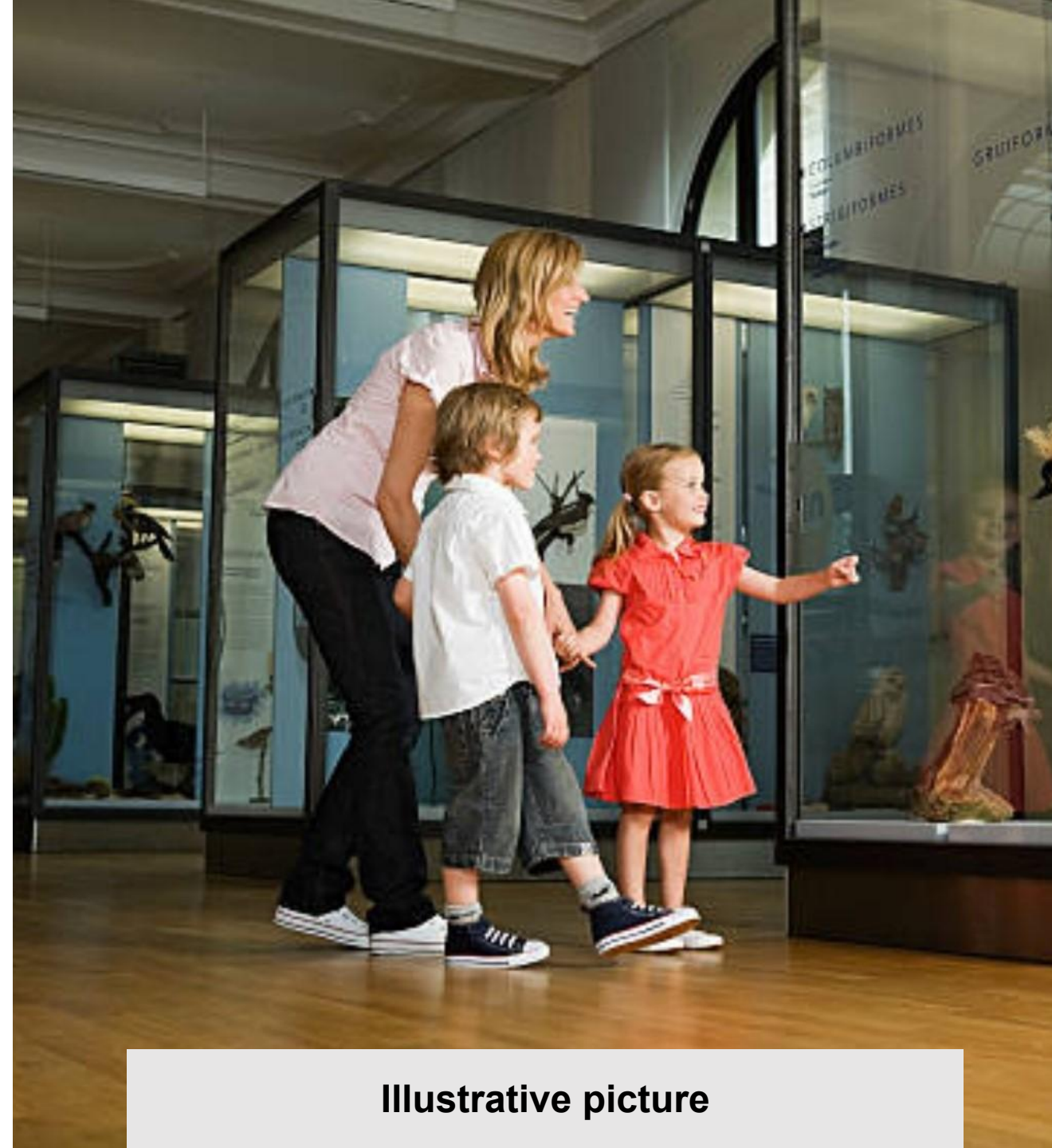
Illustrative picture

The visit

— Individual visits

You offer individual visits:

- Equipped with an amplification device: Yes
- Equipped with a magnetic induction loop: Yes
- Adapted to mental disabilities: Yes
- In French sign language (LSF): No
- In ISL (International Sign Language): No
- In lip-reading: No
- Tactile: No
- Adapted for children: Yes
- With audio description: Yes
- Other types of individual visits: No



Illustrative picture

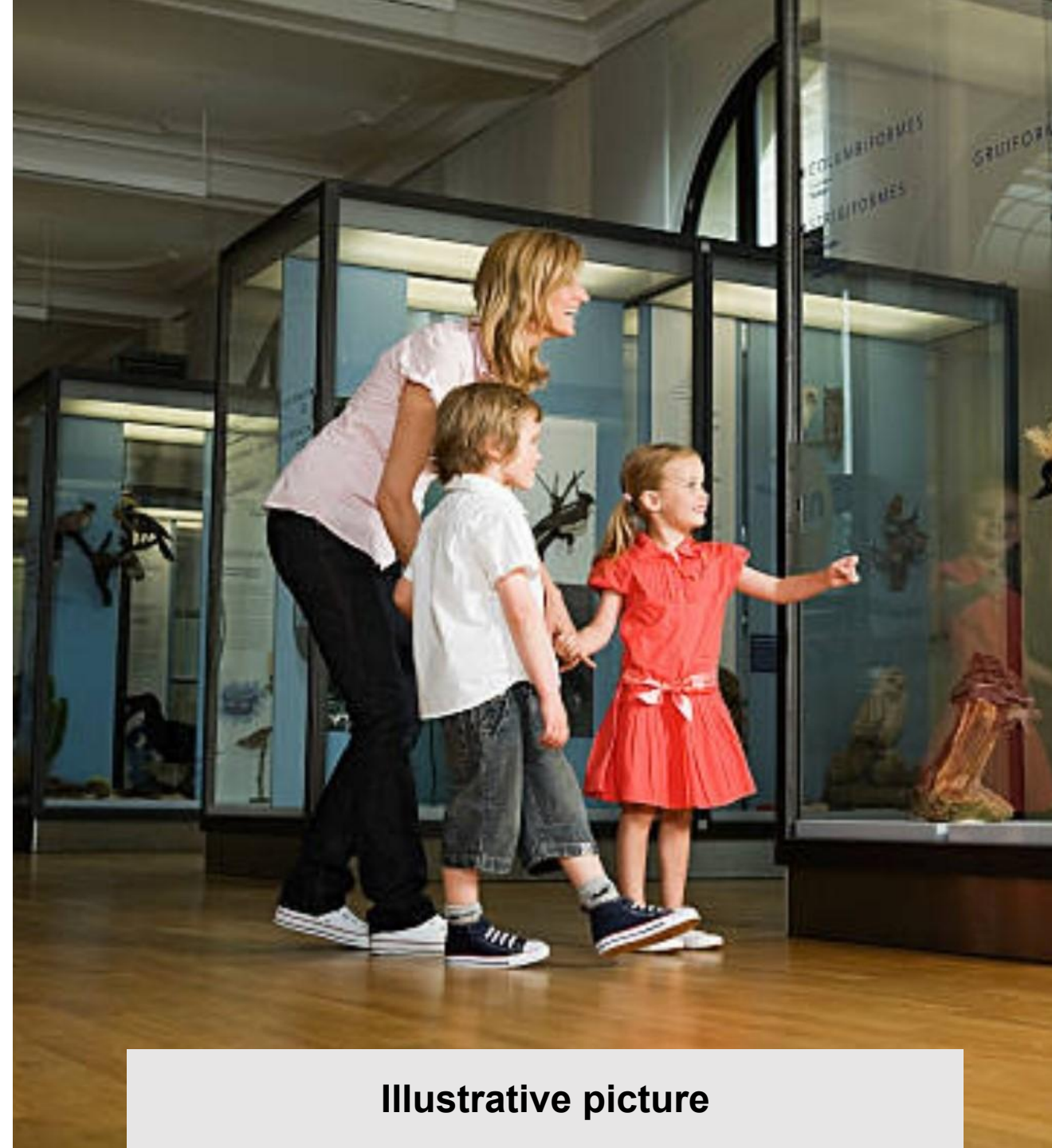
The visit

— Guided tours

You offer guided tours:

- Equipped with an amplification device: Yes
- Equipped with a magnetic induction loop: Yes
- Adapted to mental disabilities: Yes
- In French sign language (LSF): Yes
- In ISL (International Sign Language): No
- In lip-reading: No
- Tactile: No
- Adapted for children: Yes
- With audio description: Yes
- Other types of individual visits: No

Minimum group size: From 5 people



Illustrative picture

The visit

— Audio guides

Audio guides equipped with a volume control: Yes

Audio guides equipped with induction loops: Yes

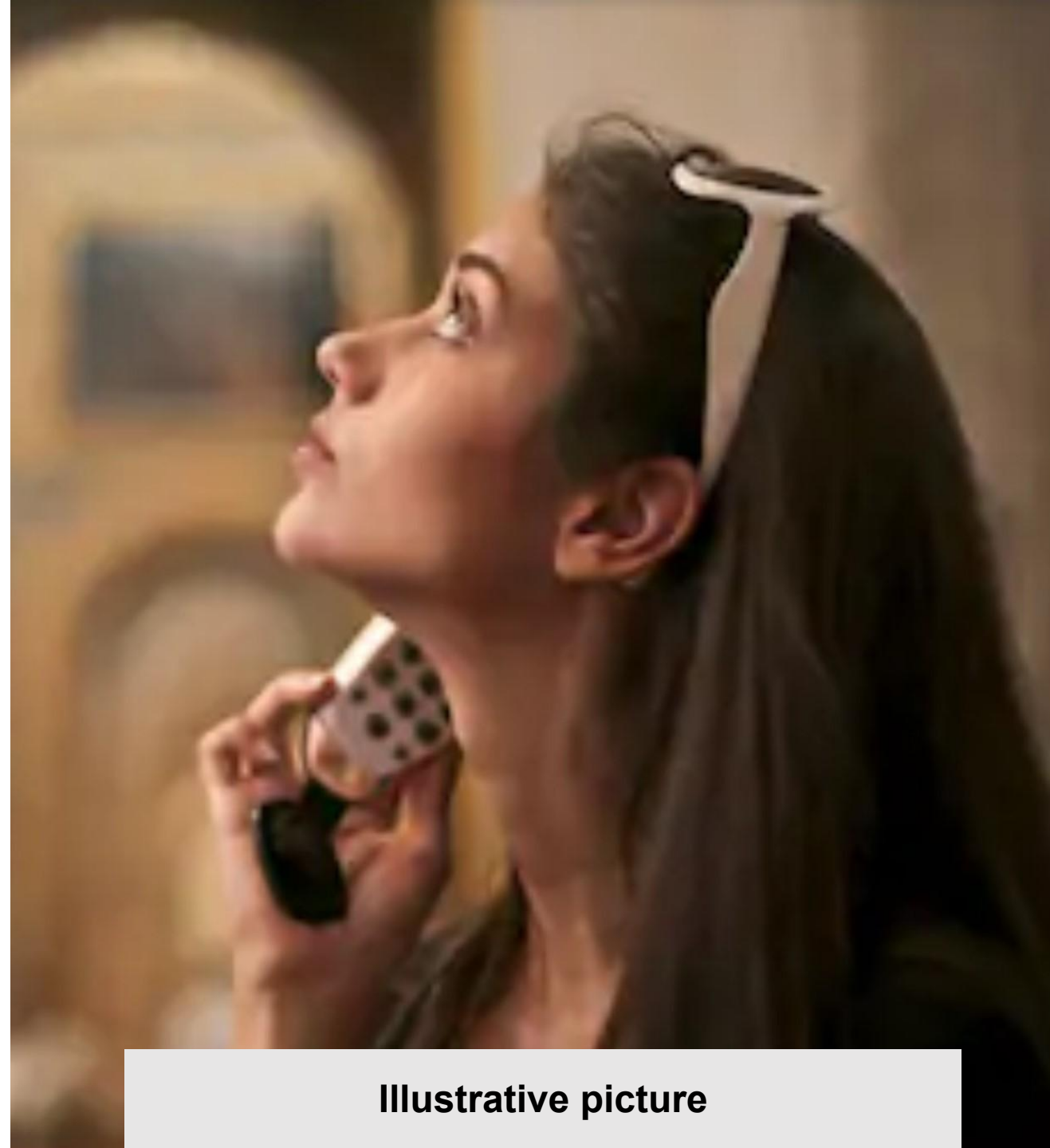
Audio guides with description elements: Yes

Audio guides with guiding features: No

Audio guides with an itinerary for children: No

Languages in addition to French:

- English: Yes
- German: No
- Spanish: No
- Italian : No
- Portuguese : No
- Other Languages: No
- Dutch: No
- Russian: No
- Japanese : No
- Chinese: No
- Korean: No



Illustrative picture

Theatre auditorium

— Auditorium

Number of Places : 300

Including PRM: 4

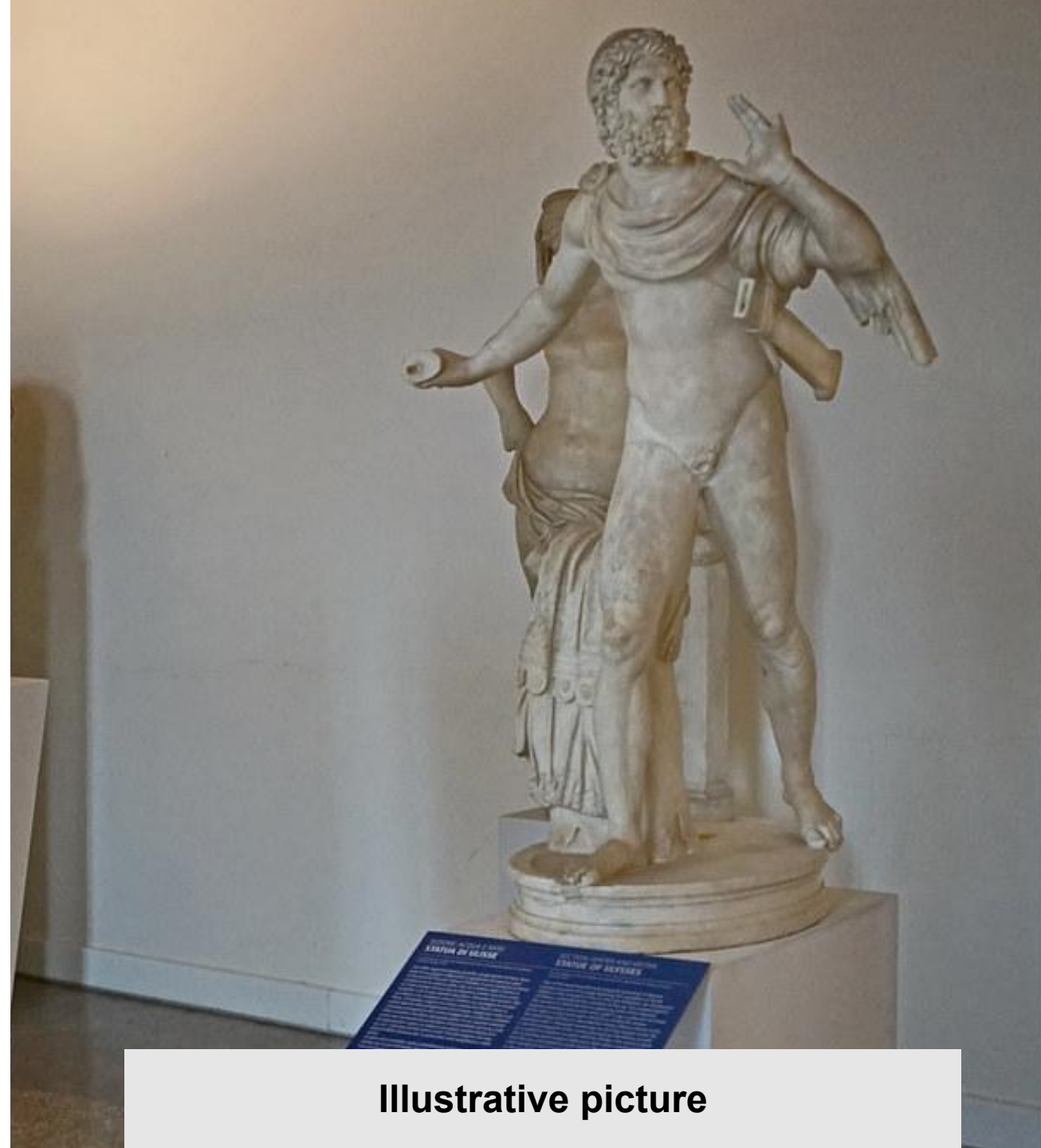
Seats are available for accompanying people: Yes

The signage is:

- Homogeneous: No
- Legible: No
- Simple to understand: No
- Associated with pictograms: No

Staff:

- Accompany people with disabilities to their seat: Yes
- Demonstrate how to use devices that help them follow the performance: Yes



Illustrative picture

Theatre auditorium

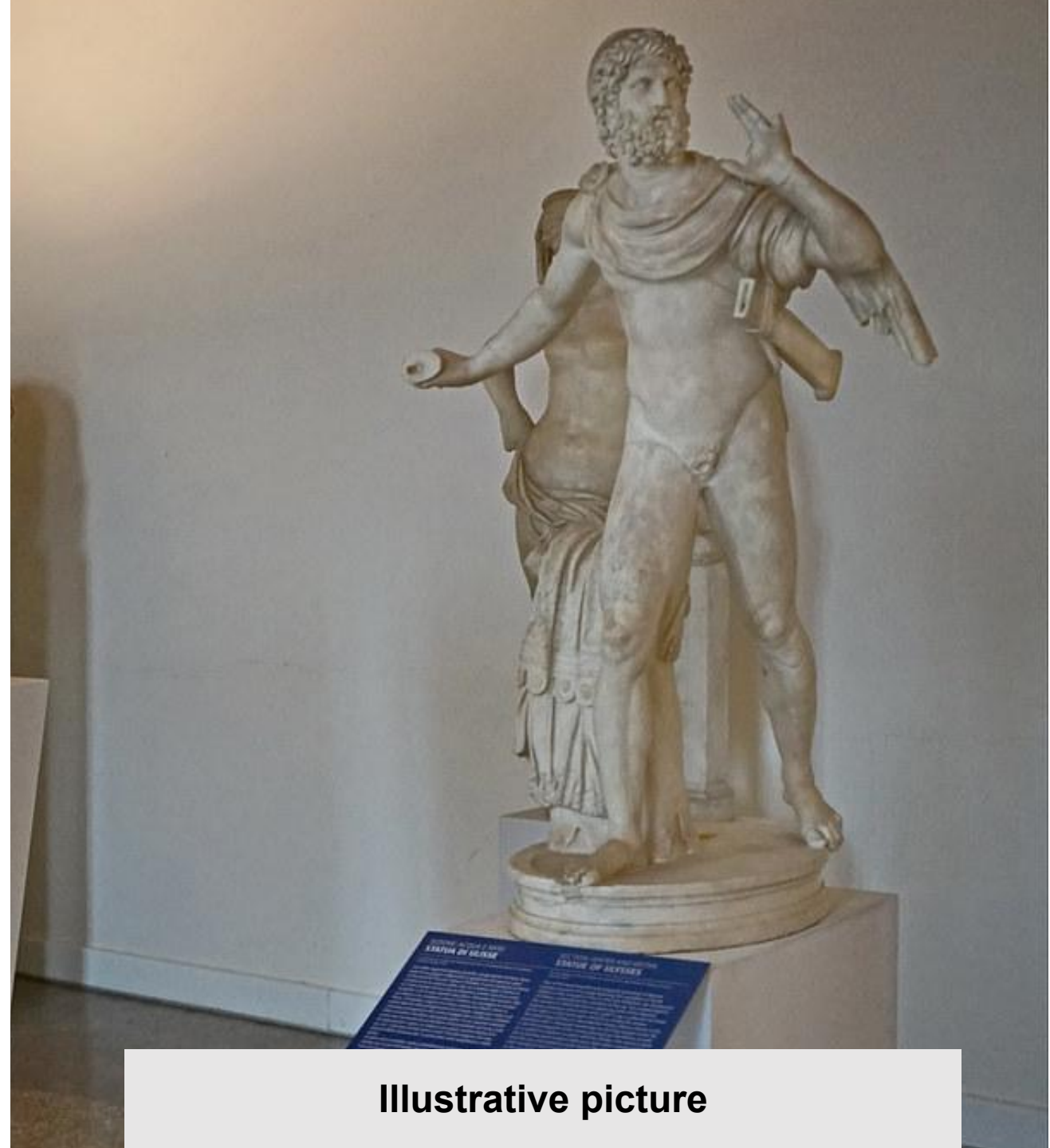
— Auditorium

Tools available to help follow a performance:

- Magnetic induction loop in the room: No
- Magnetic induction loop in seats: Yes
- Magnetic induction loop in neckband: No
- High frequency hearing aid system: No
- Infrared hearing aid system: No
- Subtitling of the show on screen: No
- Subtitling of the show on electronic booklet: No
- Audio description: No

A booklet to help follow the performance is available:

- In large print: No
- Available in Easy read: No
- Available in Braille: No



Illustrative picture

Restaurant - Le Frank

— Situation

The restaurant is located: Ground floor

Access possible from inside the establishment: Yes

Access possible from outside the establishment: No

Booking is possible by:

- SMS : No
- Acceo : No
- Email : Yes

— Staff

Staff are provided with awareness training: Yes

Staff are trained: Yes

At least one staff member speaks FSL: No



Illustrative picture

Restaurant - Le Frank

— Reception

Reception equipped with a magnetic induction loop: No

Height of the reception desk: 110 cm

Recessed part under reception desk: No

Payment at the table: Yes

Pets are accepted: Yes

Width of aisles: 140 cm

Height of tables: 74 cm

Quiet area: Yes

Round tables: Yes

Highchair: No

Adapted cutlery: Yes

Self-service restaurant: No



Illustrative picture

Restaurant - Le Frank

— La carte

On blackboard: No

Legible: Yes

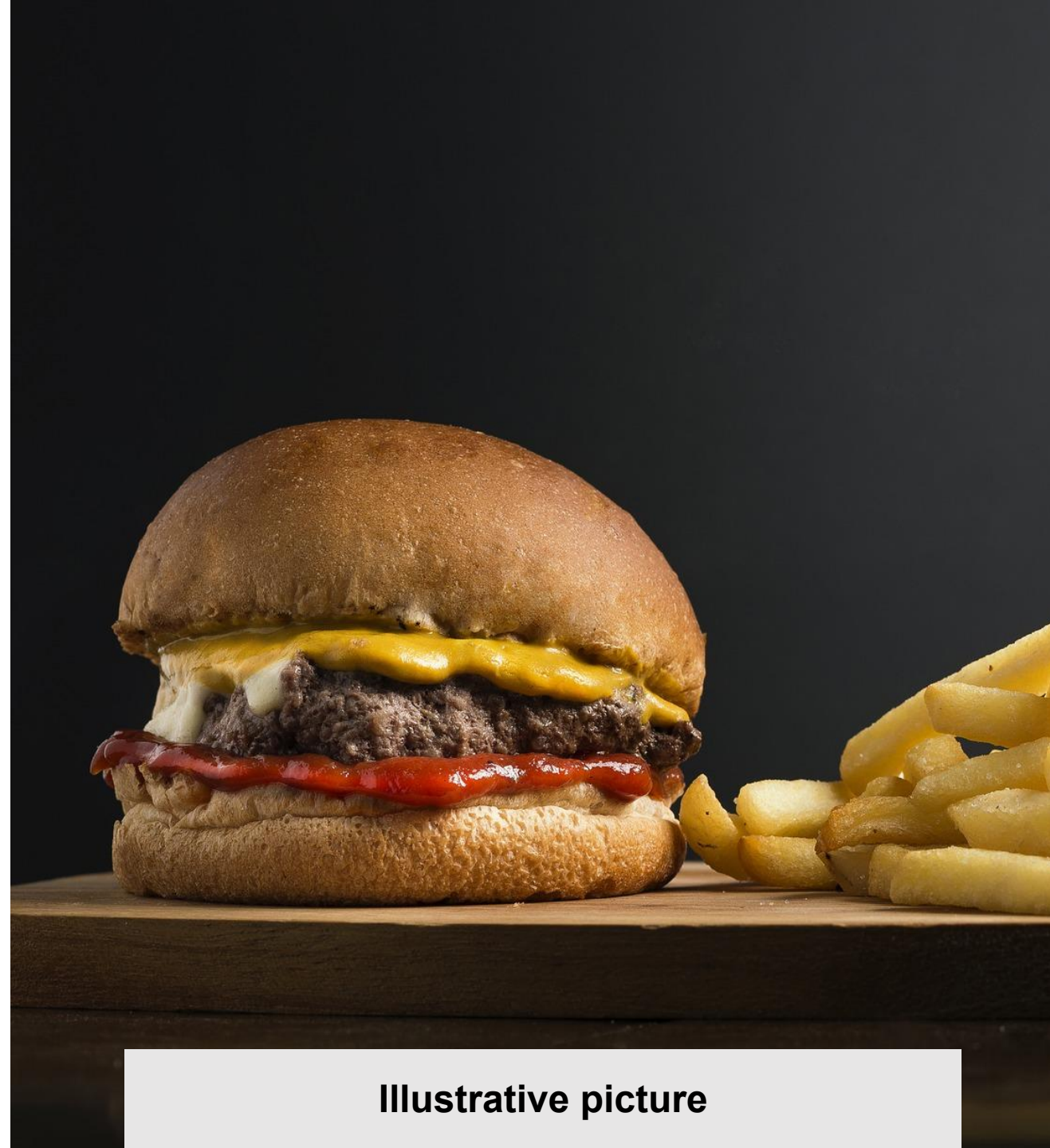
Illustrated with images: No

Simple to understand: Yes

Adapted to children: No

Suitable for the following diets:

- Vegan : Yes
- Vegetarian: Yes
- Gluten-free: Yes
- Lactose-free: Yes
- Low in salt: Yes
- Low in sugar: Yes
- Kosher: No
- Halal : No



Illustrative picture

Acknowledgments

Fondation Louis
Vuitton

PARIS

Office du Tourisme
et des Congrès

Thank you for consulting this accessibility guide, we hope you have a pleasant stay in Paris.

Updated on 2022/06/01 at 13:47.