

PARIS

Office du Tourisme
et des Congrès

Accessibility Guide

Sainte Chapelle

Hello, you are about to browse the establishment's Access Guide: « Sainte Chapelle ».

This document indicates all the ways in which this establishment facilitates access for people with specific requirements.

Outside

— Parking

Adapted parking nearby:

- On road parking: Yes
- Private parking: No
- Underground parking: No

Number of places nearby: 3

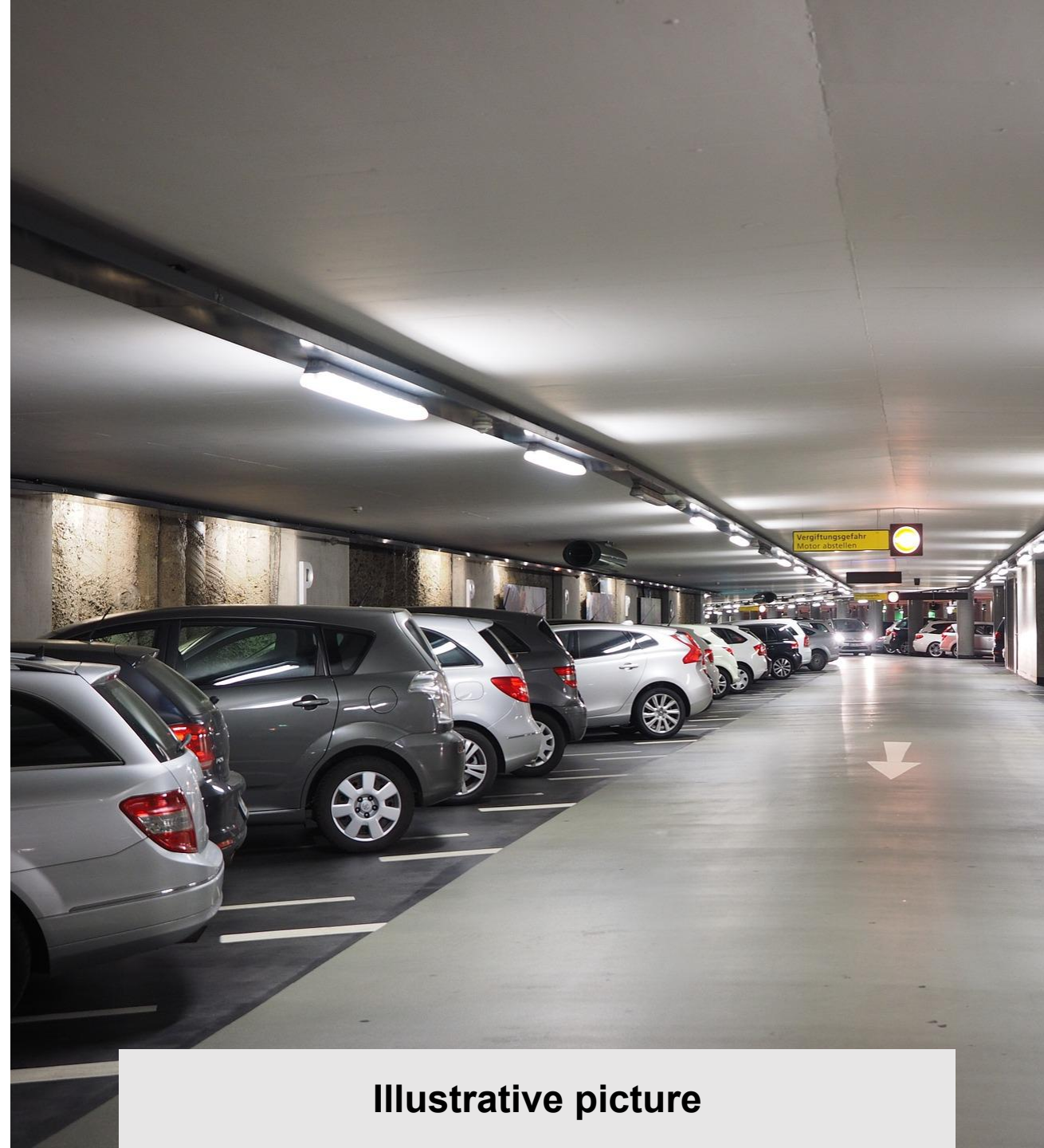
Distance: 200 m

Places signposted: Yes

Drop-off area: No

— Access problems

Possible access problems: No specific problems



Illustrative picture

Outside

— Entrance

Type of entrance: Almost flat (step 0 to 2 cm)

Monitored entrance: Yes

Entrance visible from door: No

— Door

Type of door: Manual door

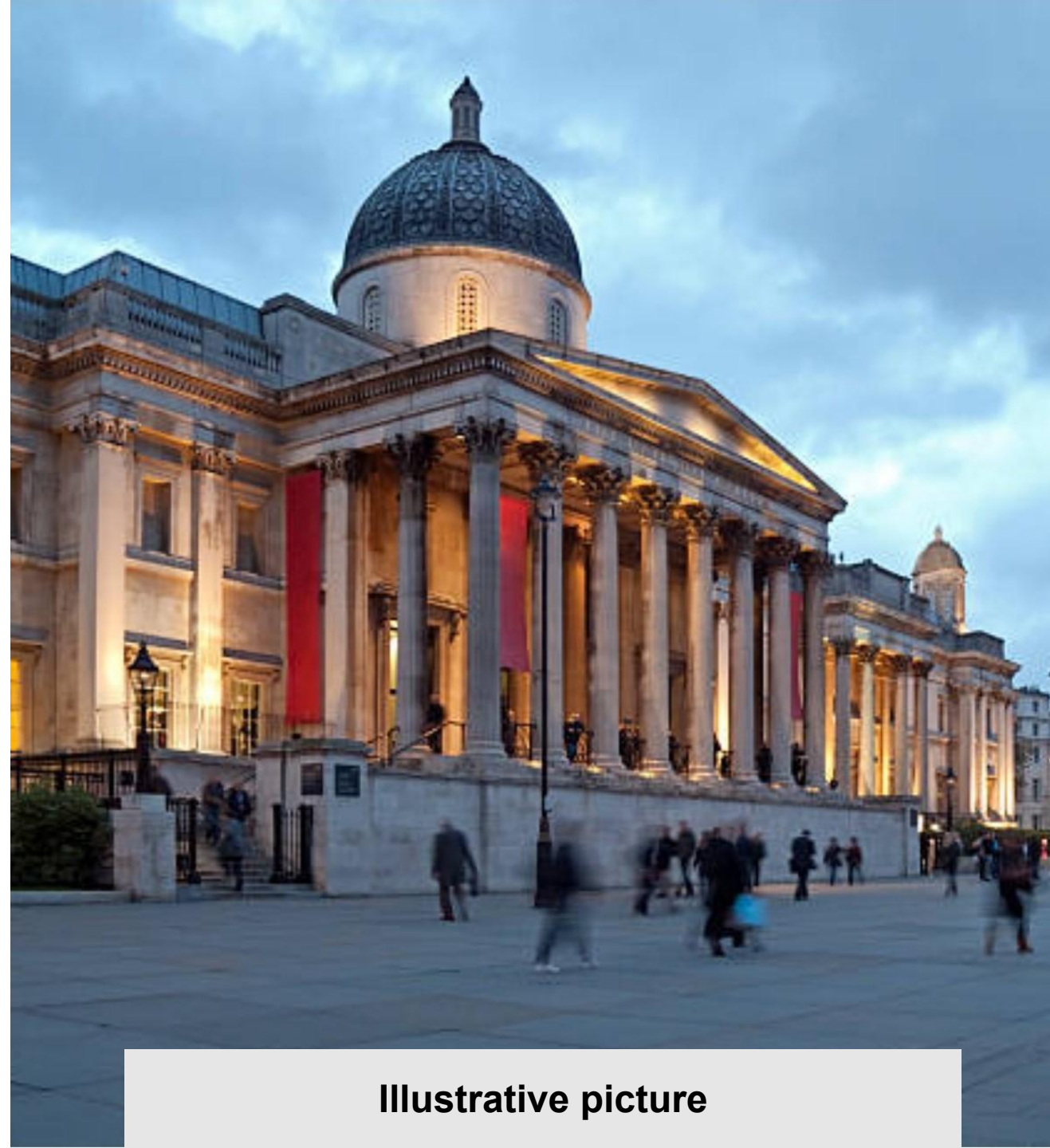
The door has a call facility: No

Indoors

— Indoors

Width of the narrowest corridor: 90 cm

Width of the narrowest doorway: 90 cm



Illustrative picture

Indoors

— Signage

Homogeneous: Yes

Legible: Yes

Easy to understand: Yes

Combined with pictograms: Yes

Duplicated in Braille: No

Relief model: No

Relief map: No

Map in large print: No

Simplified map: No

Map with contrasting colours: No

— Glass walls

Glass walls, if any, are marked:

There are no glass doors or walls in my establishment



Illustrative picture

Indoors

— Stairs

Presence of stairs in the establishment: Yes

Distinctive features of the stairs:

- Podotactile strip: No
- Continuous handrail: No
- Contrasting stair nosing: Yes

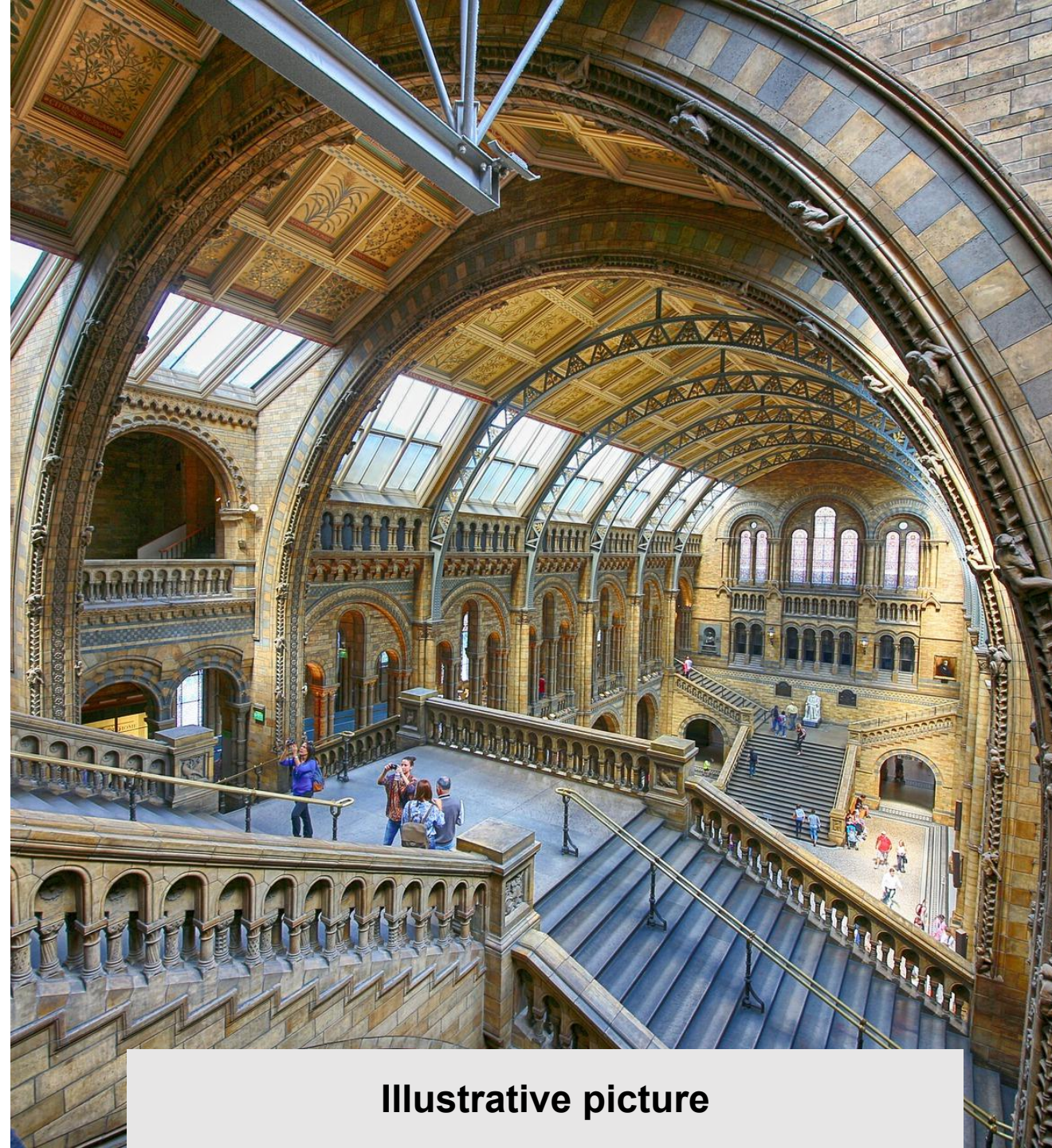
— Lift

Presence of a lift in the establishment: Yes

Height of the highest button: 120 cm

Distinctive features of the lift:

- Announcer: Visual announcer
- Magnetic induction loop: No
- Handrail: Yes
- Buttons: Buttons in large print, Buttons in relief



Illustrative picture

Indoors

— Toilet facilities

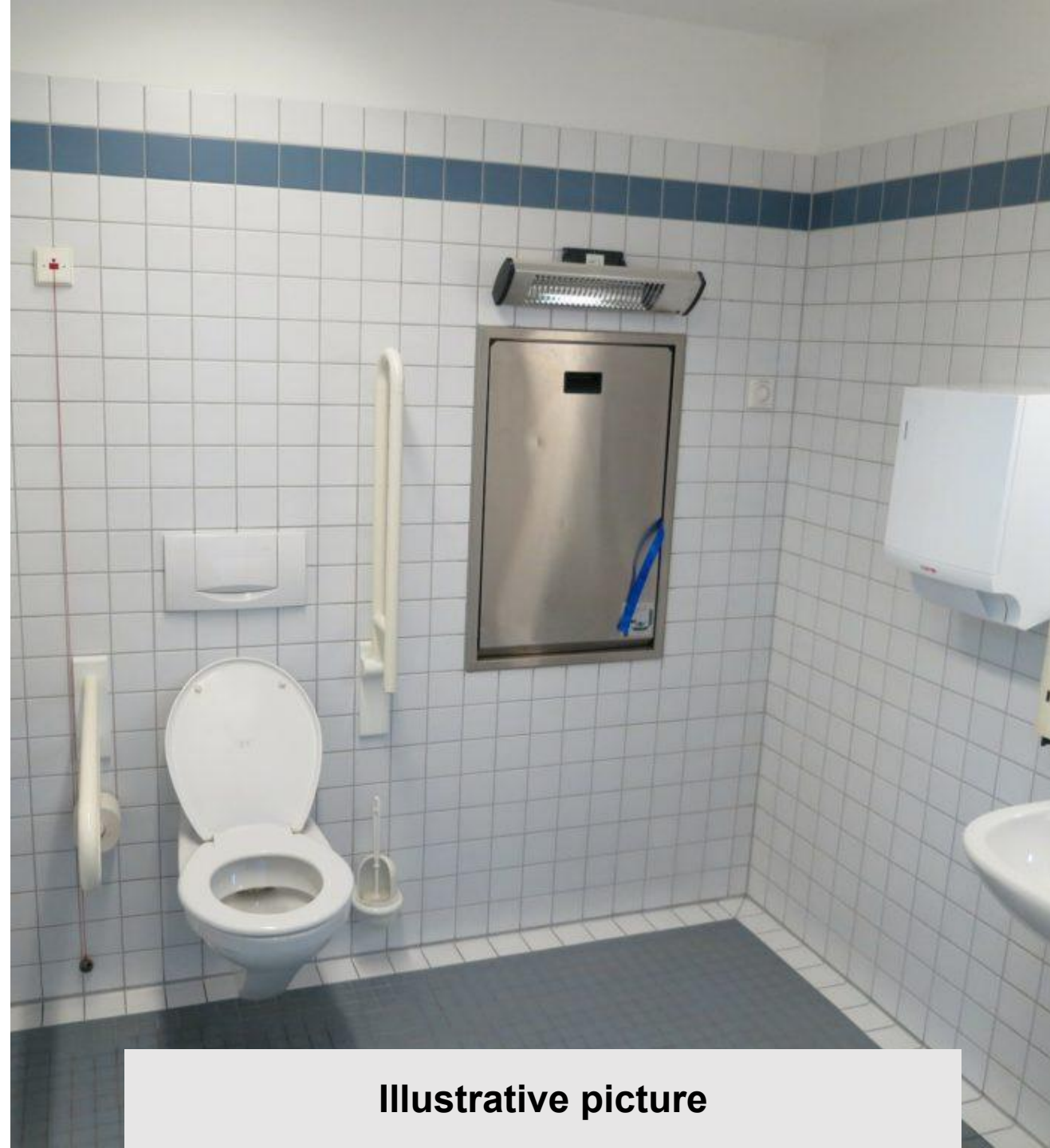
Presence of toilets onsite: Yes

These toilets are accessible: No

Number of accessible seats onsite: 0

Flashing lights: No

Changing table: No



Illustrative picture

Reception

— Reception

Reception equipped with a magnetic induction loop: No

Height of the reception desk: 120 cm

Recessed part under reception desk: No

Booking is possible by:

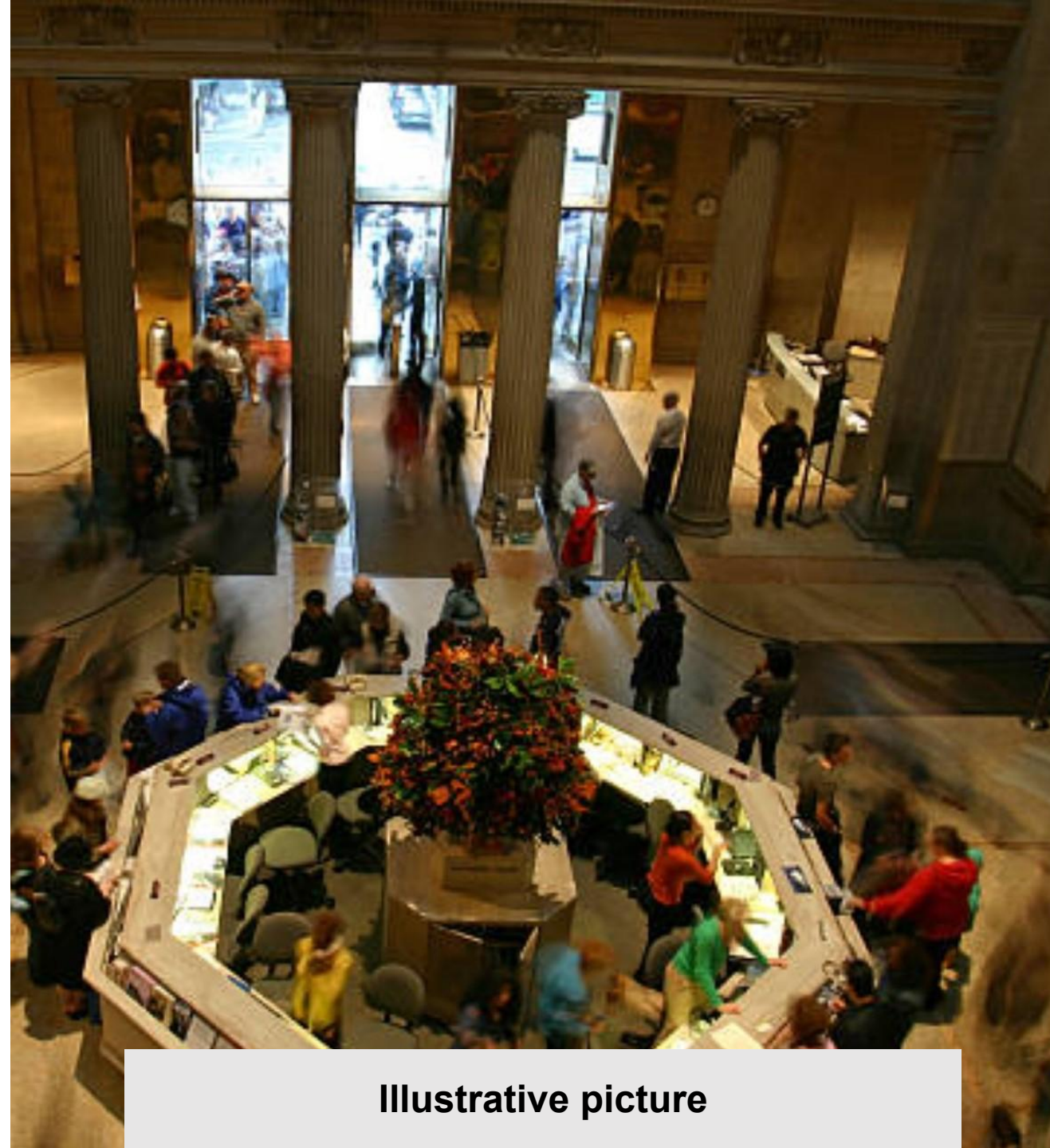
- SMS : No
- Acceo : No
- Email : No

— Staff

Staff are provided with awareness training: Yes

Staff are trained: No

At least one staff member speaks FSL: No



Illustrative picture

Reception

— Pricing policy

Free on presentation of an official document: Yes

Free for the accompanying person: Yes

Free for seniors (+ 65 yrs): No

Free for children (- 12 yrs): Yes

Reduced rate on presentation of an official document: No

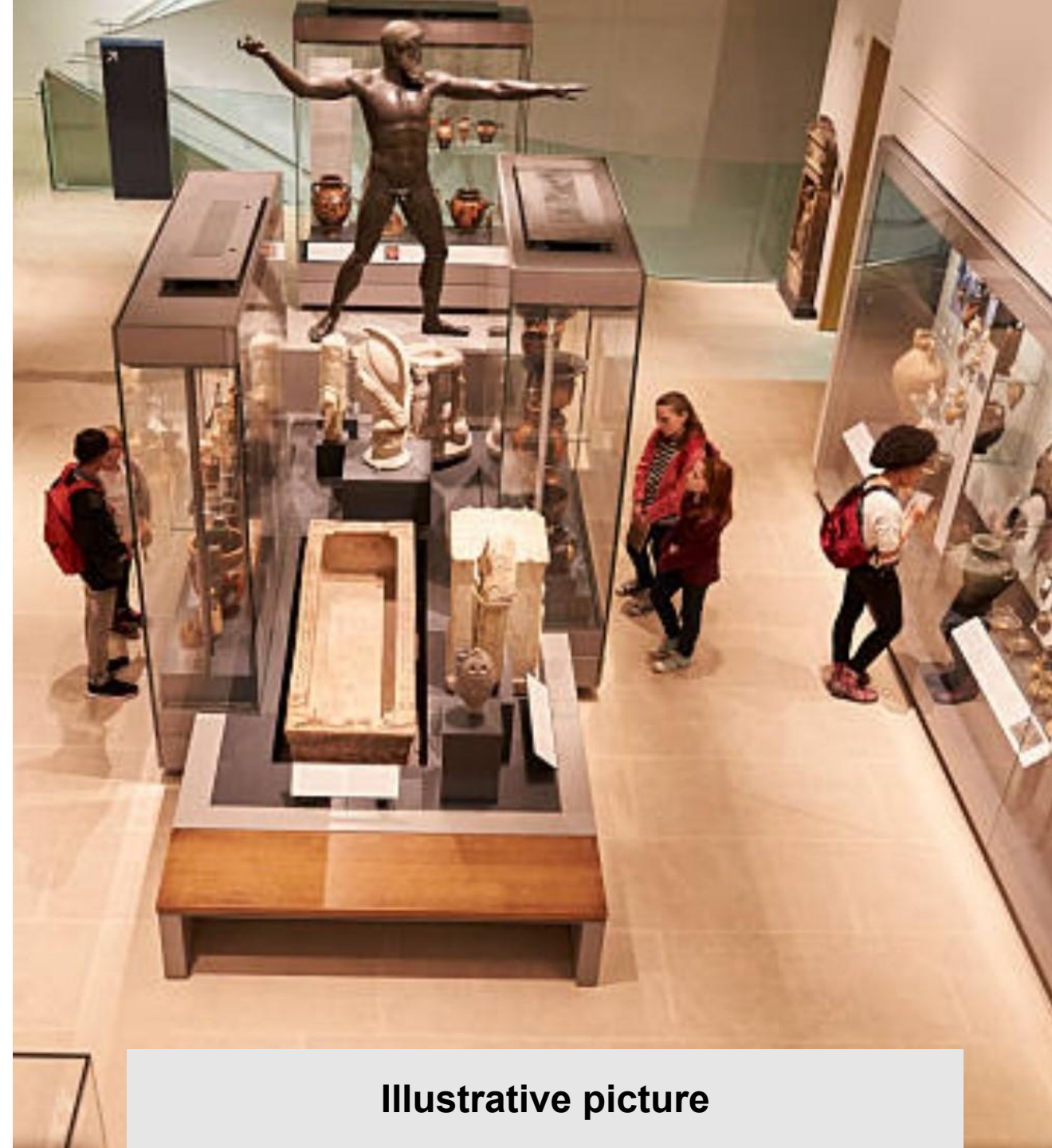
Reduced rate for the accompanying person: No

Reduced rate for seniors (+ 65 yrs): No

Reduced rate for children (- 12 yrs): No

Special rate for large families (5 people +): No

Other specific rate: Yes



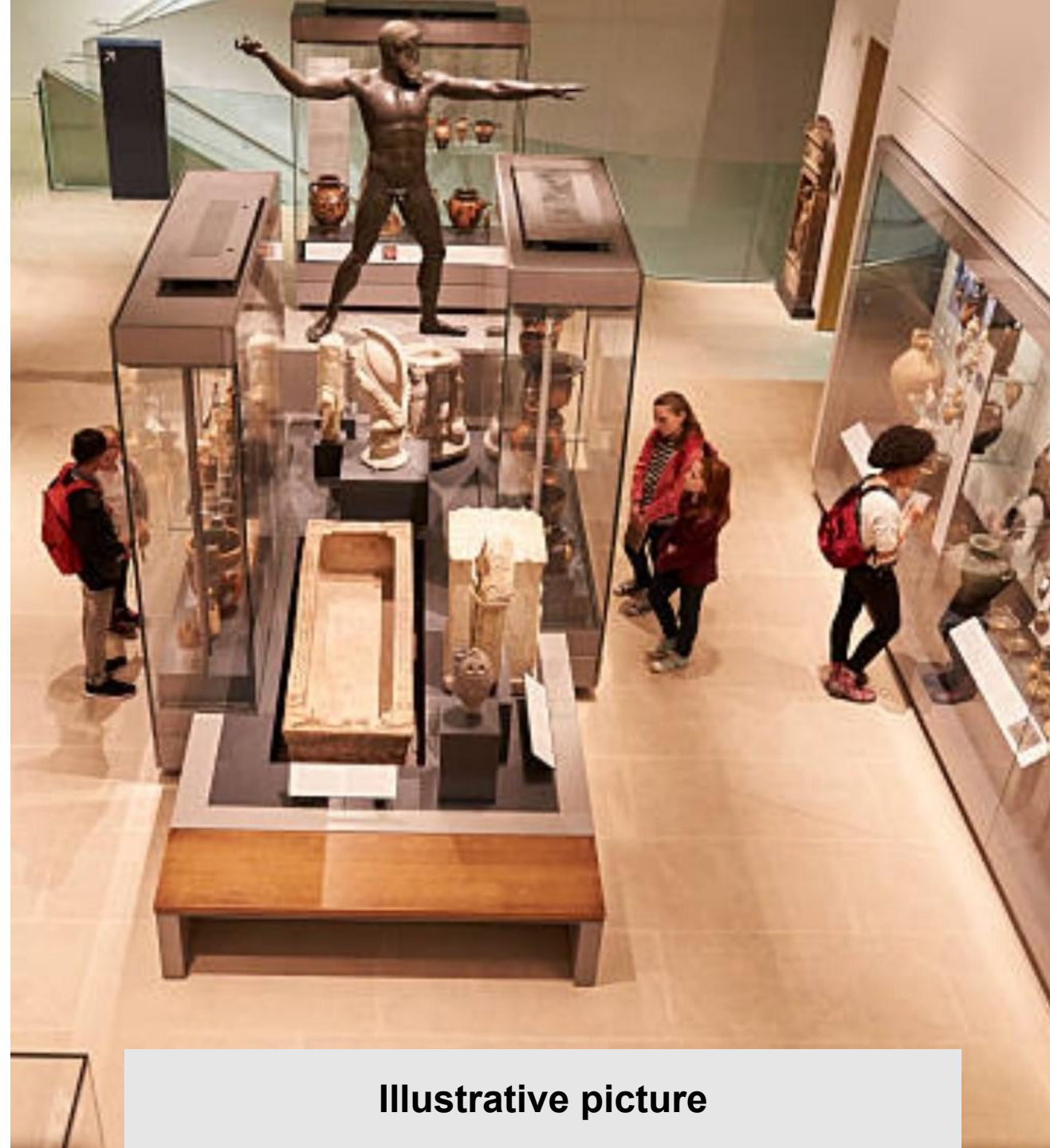
Illustrative picture

Reception

— Pricing policy

The pricing policy applies to the following:

- Self-guided tour: Yes
- Guided tour: No
- Temporary exhibitions: No
- Audioguides: No
- Pedagogical workshops: No
- Concerts : No
- Shows: No
- Attractions: No
- Meeting rooms: No
- Other types of services: No



Illustrative picture

Reception

— Services

Pets are accepted: No

Pushchairs are accepted for the visit: Only if small

Loan of baby carriers: No

Loan of pushchairs: No

Loan of wheelchairs: No

Loan of cane seats: No

Loan of folding seats: No

Loan of magnifying glasses: No

Sitting areas available in all rooms that can be visited: No

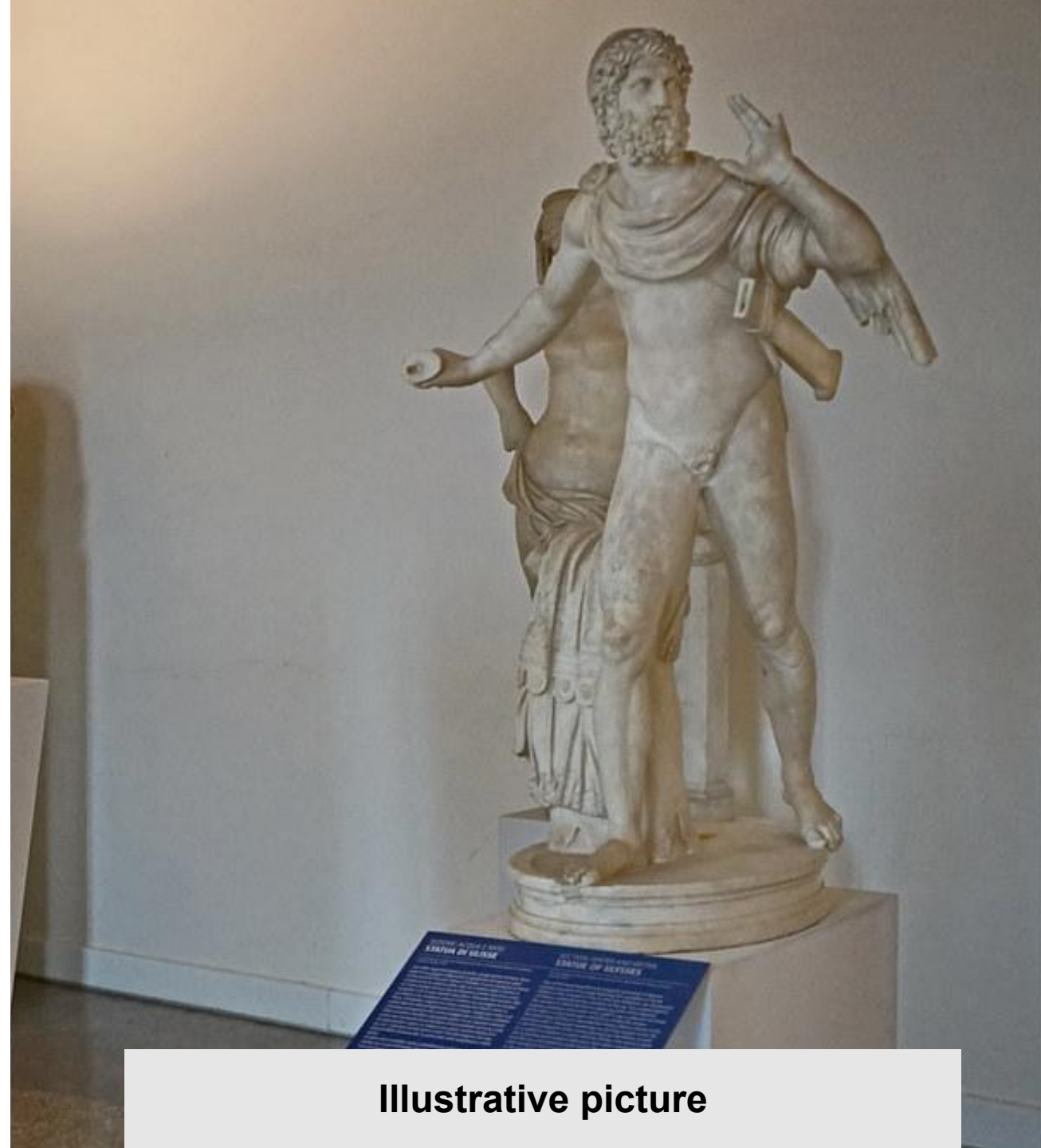
— Wall labels

Height of labels: 90 cm

Large print labels: No

Relief labels: No

Braille labels: No



Illustrative picture

The visit

— Visitor aids

Aid in following the show/visit: No

Pedagogical workshops: Yes

Documentation in Braille: No

Documentation in large print: Yes

Thermoformed documentation: No

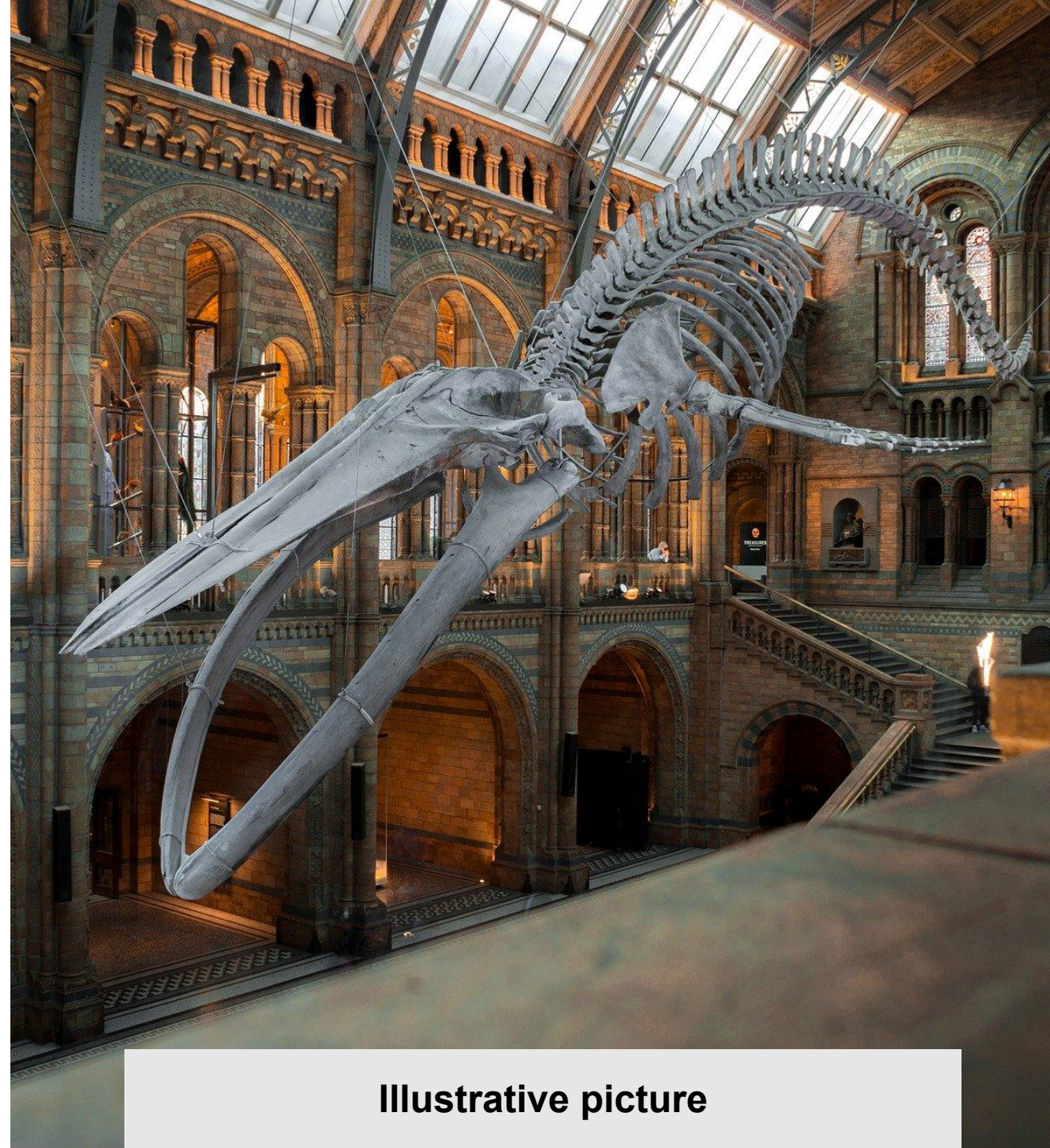
Documentation in Easy read: No

App for children / families for a visit: No

Children's booklets / games: Yes

Guided tour: No

Audio guide: Yes



Illustrative picture

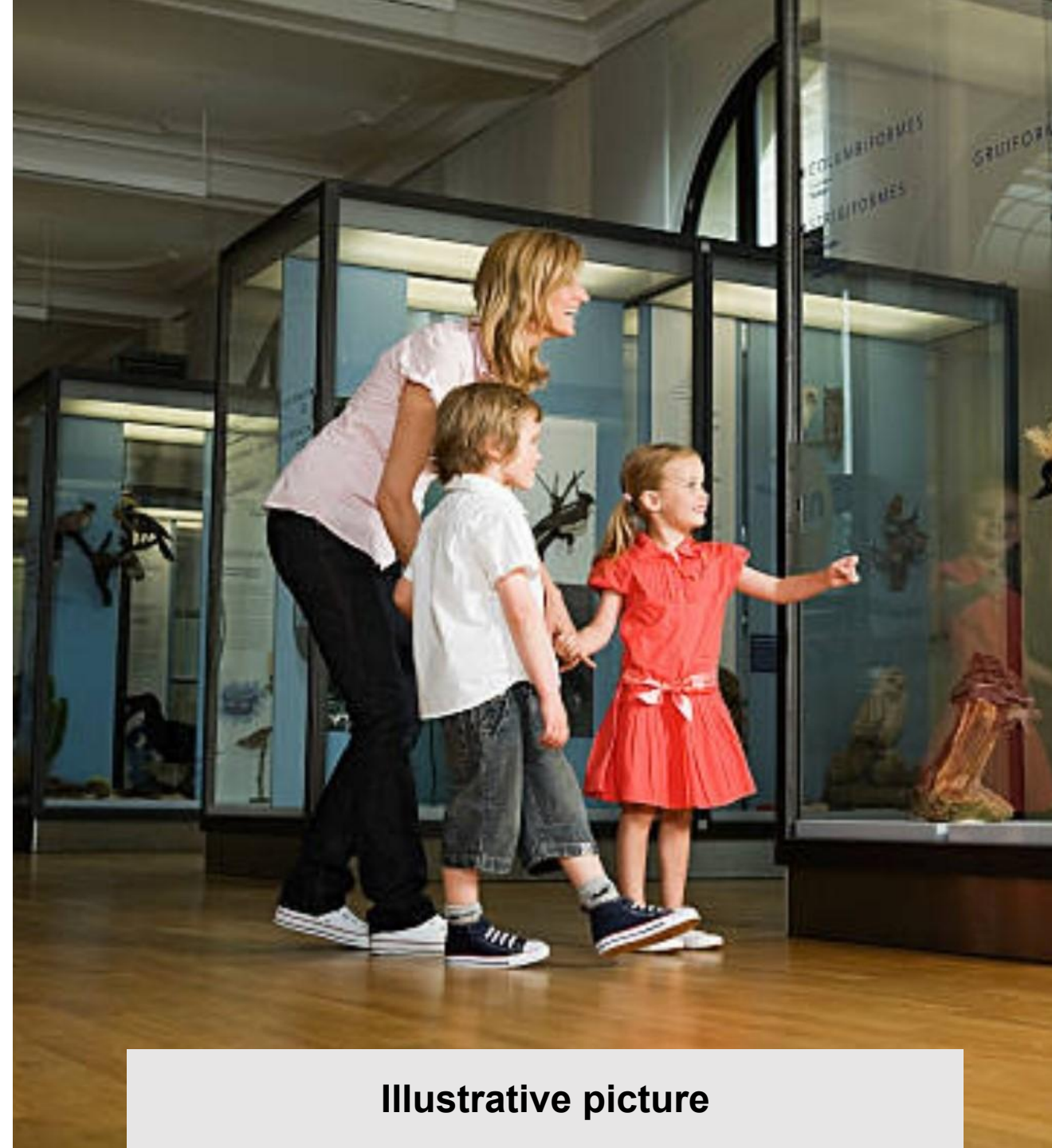
The visit

— Guided tours

You offer guided tours:

- Equipped with an amplification device: No
- Equipped with a magnetic induction loop: Yes
- Adapted to mental disabilities: Yes
- In French sign language (LSF): Yes
- In ISL (International Sign Language): No
- In lip-reading: Yes
- Tactile: Yes
- Adapted for children: No
- With audio description: Yes
- Other types of individual visits: No

Minimum group size: From 8 people



Illustrative picture

The visit

— Audio guides

Audio guides equipped with a volume control: Yes

Audio guides equipped with induction loops: No

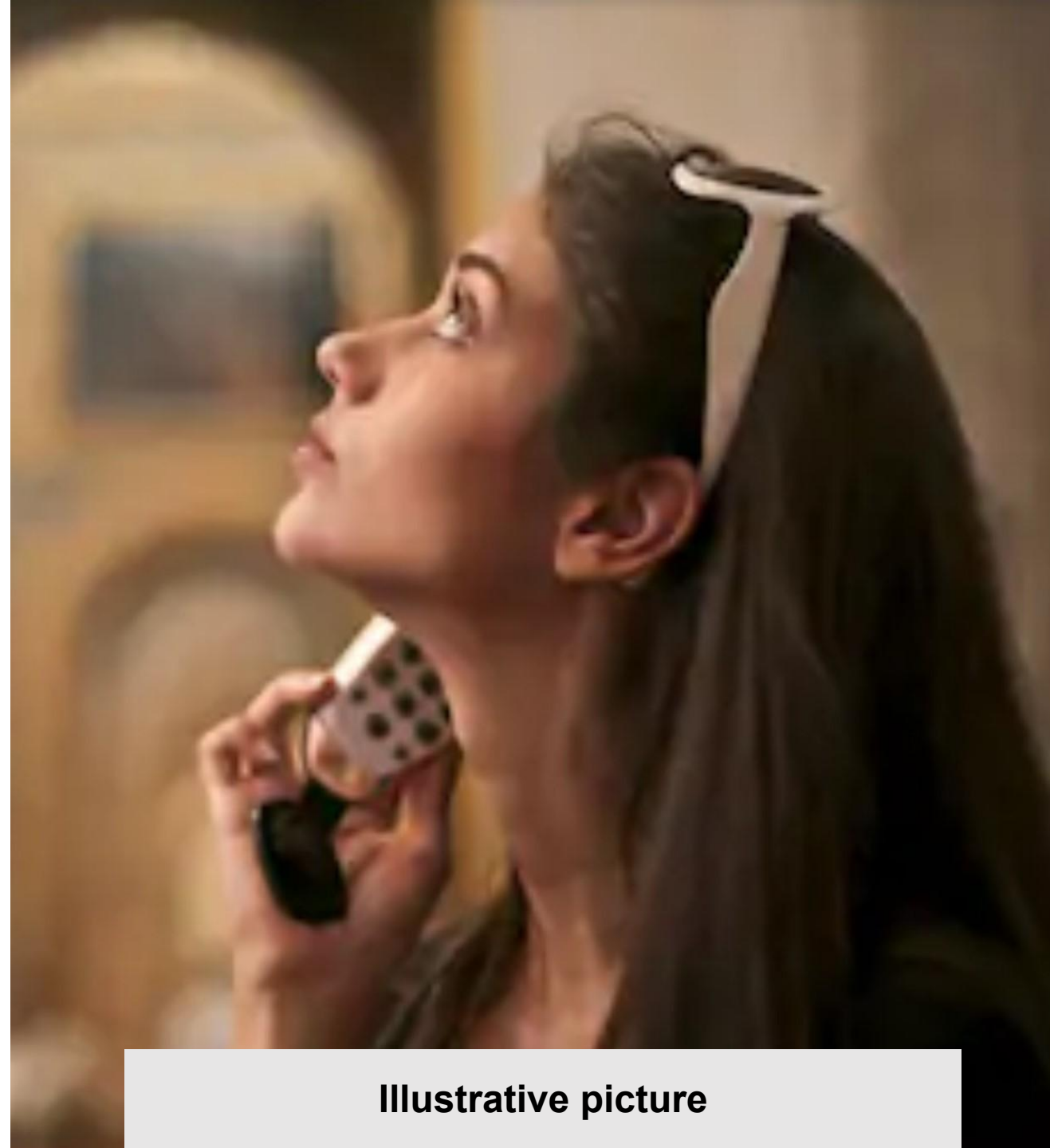
Audio guides with description elements: No

Audio guides with guiding features: No

Audio guides with an itinerary for children: No

Languages in addition to French:

- English: Yes
- German: Yes
- Spanish: Yes
- Italian : Yes
- Portuguese : No
- Other Languages: No
- Dutch: No
- Russian: No
- Japanese : Yes
- Chinese: No
- Korean: No



Illustrative picture

Acknowledgments

Sainte Chapelle

PARIS

Office du Tourisme
et des Congrès

Thank you for consulting this accessibility guide, we hope you have a pleasant stay in Paris.

Updated on 2022/05/05 at 08:38.